

# CDH10 Antibody



PACO45416

---

## Product Information

**Size:**

50ul

**Reactivity:**

Human, Rat

**Source:**

Rabbit

**Isotype:**

IgG

**Applications:**

ELISA, WB

**Recommended dilutions:**

ELISA:1:2000-1:10000, WB:1:1000-1:5000

**Protein Background:**

Cadherins are calcium-dependent cell adhesion proteins. They preferentially interact with themselves in a homophilic manner in connecting cells; cadherins may thus contribute to the sorting of heterogeneous cell types.

**Gene ID:**

CDH10

**Uniprot**

Q9Y6N8

**Synonyms:**

Cadherin-10 (T2-cadherin), CDH10

**Immunogen:**

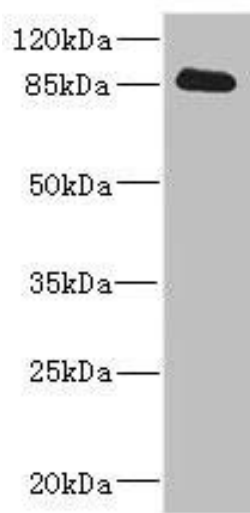
Recombinant Human Cadherin-10 protein (20-260AA).

**Storage:**

PBS with 0.02% sodium azide, 50% glycerol, pH7.3.

## Product Images

---



Western blot. All lanes: CDH10 antibody IgG at 3.58 $\mu$ g/ml + Rat heart tissue. Secondary. Goat polyclonal to rabbit IgG at 1/10000 dilution. Predicted band size: 88 kDa. Observed band size: 88 kDa.