

# ADGRG6 Antibody



PACO45405

---

## Product Information

**Size:**

50ul

**Reactivity:**

Human

**Source:**

Rabbit

**Isotype:**

IgG

**Applications:**

ELISA, IHC

**Recommended dilutions:**

ELISA:1:2000-1:10000, IHC:1:20-1:200

**Protein Background:**

G-protein coupled receptor which is activated by type IV collagen, a major constituent of the basement membrane. Essential for normal differentiation of promyelinating Schwann cells and for normal myelination of axons.

**Gene ID:**

ADGRG6

**Uniprot**

Q86SQ4

**Synonyms:**

Adhesion G-protein coupled receptor G6 (Developmentally regulated G-protein-coupled receptor) (G-protein coupled receptor 126) (Vascular inducible G protein-coupled receptor) [Cleaved into: ADGRG6 N-terminal fragment (ADGRG6-NTF); ADGRG6 C-terminal fragment (ADGRG6-CTF)], ADGRG6, DREG GPR126 VIGR

**Immunogen:**

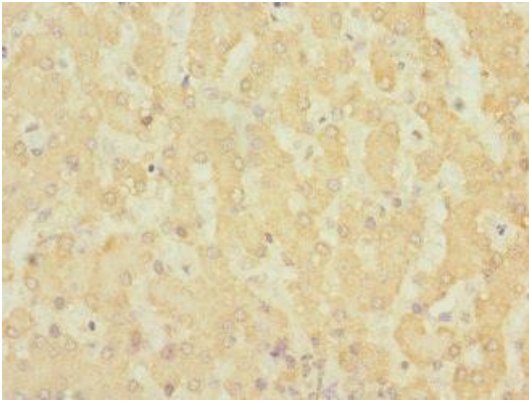
Recombinant Human Adhesion G-protein coupled receptor G6 protein (40-300AA).

**Storage:**

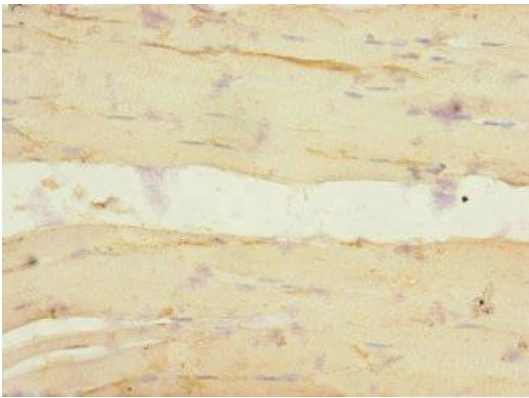
PBS with 0.02% sodium azide, 50% glycerol, pH7.3.

## Product Images

---



Immunohistochemistry of paraffin-embedded human liver tissue using PACO45405 at dilution of 1:100.



Immunohistochemistry of paraffin-embedded human skeletal muscle tissue using PACO45405 at dilution of 1:100.