

# PRKAR1B Antibody



PACO45399

---

## Product Information

**Size:**

50ul

**Reactivity:**

Human

**Source:**

Rabbit

**Isotype:**

IgG

**Applications:**

ELISA, IHC

**Recommended dilutions:**

ELISA:1:2000-1:10000, IHC:1:20-1:200

**Protein Background:**

Regulatory subunit of the cAMP-dependent protein kinases involved in cAMP signaling in cells.

**Gene ID:**

PRKAR1B

**Uniprot**

P31321

**Synonyms:**

cAMP-dependent protein kinase type I-beta regulatory subunit, PRKAR1B

**Immunogen:**

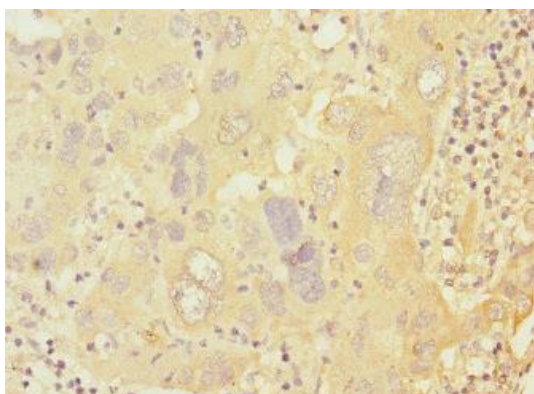
Recombinant Human cAMP-dependent protein kinase type I- $\beta$ ; regulatory subunit protein (190-290AA).

**Storage:**

PBS with 0.02% sodium azide, 50% glycerol, pH7.3.

## Product Images

---



Immunohistochemistry of paraffin-embedded human liver cancer using PACO45399 at dilution of 1:100.