

PACO45384

Product Information

Size:

50ul

Reactivity:

Human

Source:

Rabbit

Isotype:

IgG

Applications:

ELISA, IHC

Recommended dilutions:

ELISA:1:2000-1:10000, IHC:1:20-1:200

Protein Background:

extracellular exosome, extracellular space, membrane, nucleus, trans-Golgi network, metallocarboxypeptidase activity, serine-type carboxypeptidase activity, peptide metabolic process, protein processing.

Gene ID:

CPD

Uniprot

O75976

Synonyms:

Carboxypeptidase D (EC 3.4.17.22) (Metallocarboxypeptidase D) (gp180), CPD

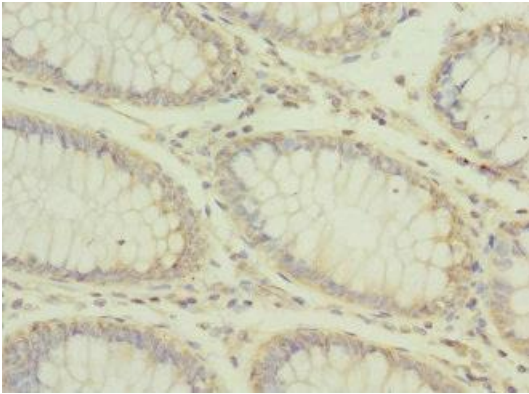
Immunogen:

Recombinant Human Carboxypeptidase D protein (860-1100AA).

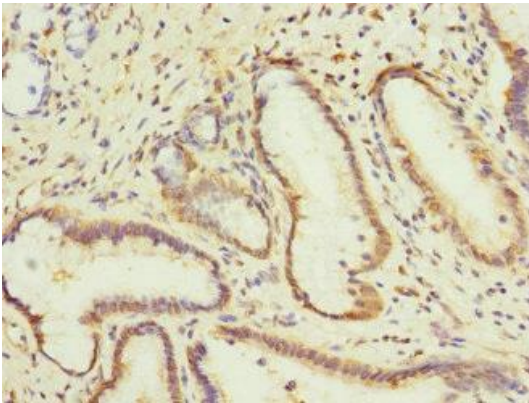
Storage:

PBS with 0.02% sodium azide, 50% glycerol, pH7.3.

Product Images



Immunohistochemistry of paraffin-embedded human colon cancer using PACO45384 at dilution of 1:100.



Immunohistochemistry of paraffin-embedded human pancreatic tissue using PACO45384 at dilution of 1:100.