

## Product Information

**Size:**

50ul

**Reactivity:**

Human, Mouse

**Source:**

Rabbit

**Isotype:**

IgG

**Applications:**

ELISA, WB, IHC

**Recommended dilutions:**

ELISA:1:2000-1:10000, WB:1:1000-1:5000,  
IHC:1:20-1:200

**Protein Background:**

Synthesizes the second messengers cyclic ADP-ribose and nicotinate-adenine dinucleotide phosphate, the former a second messenger that elicits calcium release from intracellular stores. May be involved in pre-B-cell growth.

**Gene ID:**

BST1

**Uniprot**

Q10588

**Synonyms:**

ADP-ribosyl cyclase/cyclic ADP-ribose hydrolase 2 (EC 3.2.2.6) (ADP-ribosyl cyclase 2) (Bone marrow stromal antigen 1) (BST-1) (Cyclic ADP-ribose hydrolase 2) (cADPr hydrolase 2) (CD antigen CD157), BST1

**Immunogen:**

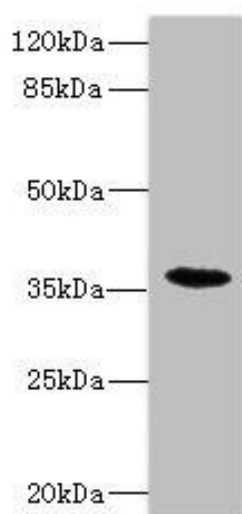
Recombinant Human ADP-ribosyl cyclase/cyclic ADP-ribose hydrolase 2 protein (29-293AA).

**Storage:**

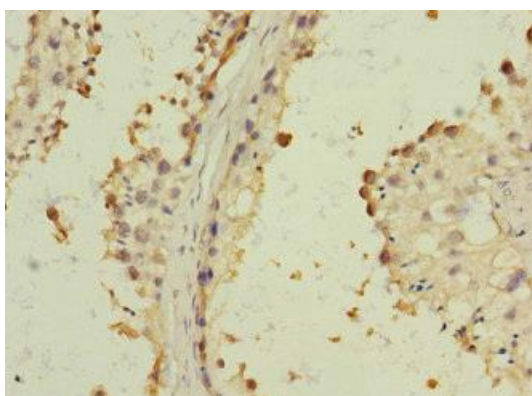
PBS with 0.02% sodium azide, 50% glycerol, pH7.3.

## Product Images

---



Western blot. All lanes: BST1 antibody IgG at 1.47 $\mu$ g/ml + Mouse lung tissue. Secondary. Goat polyclonal to rabbit IgG at 1/10000 dilution. Predicted band size: 36, 30 kDa. Observed band size: 36 kDa.



Immunohistochemistry of paraffin-embedded human testis tissue using PACO45380 at dilution of 1:100.