

PACO45329

Product Information

Size:

50ul

Reactivity:

Human

Source:

Rabbit

Isotype:

IgG

Applications:

ELISA, WB, IHC

Recommended dilutions:

ELISA:1:2000-1:10000, WB:1:1000-1:5000,
IHC:1:20-1:200

Protein Background:

Catalyzes the oxidation of hydrogen sulfide with the help of a quinone, such as ubiquinone, giving rise to thiosulfate and ultimately to sulfane (molecular sulfur) atoms. Requires an additional electron acceptor; can use sulfite, sulfide or cyanide (in vitro).

Gene ID:

SQOR

Uniprot

Q9Y6N5

Synonyms:

Sulfide: quinone oxidoreductase, mitochondrial (SQOR) (EC 1.8.5. -) (Sulfide dehydrogenase-like) (Sulfide quinone oxidoreductase), SQOR, SQRDL

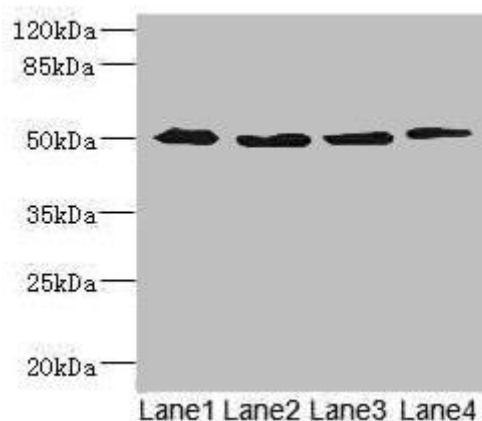
Immunogen:

Recombinant Human Sulfide: quinone oxidoreductase, mitochondrial protein (211-450AA).

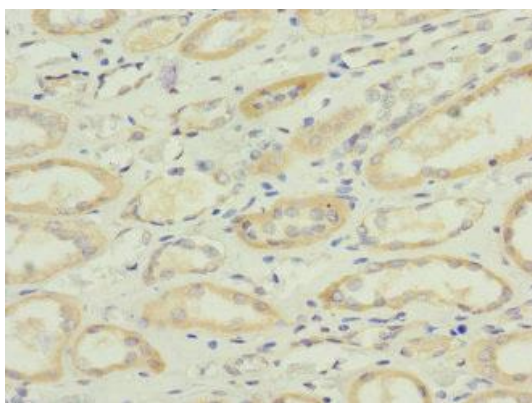
Storage:

PBS with 0.02% sodium azide, 50% glycerol, pH7.3.

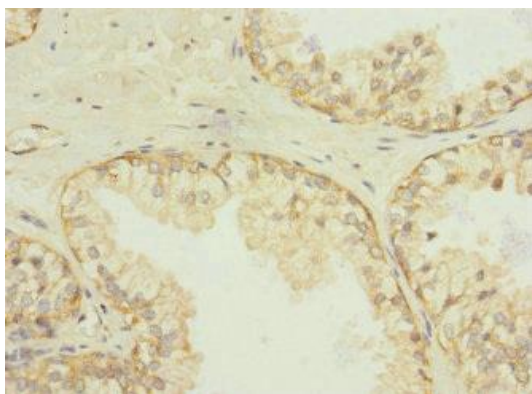
Product Images



Western blot. All lanes: SQRDL antibody at 4.67 μ g/ml. Lane 1: A549 whole cell lysate. Lane 2: A431 whole cell lysate. Lane 3: Hela whole cell lysate. Lane 4: HepG2 whole cell lysate. Secondary. Goat polyclonal to rabbit IgG at 1/10000 dilution. Predicted band size: 50 kDa. Observed band size: 50 kDa.



Immunohistochemistry of paraffin-embedded human kidney tissue using PACO45329 at dilution of 1:100.



Immunohistochemistry of paraffin-embedded human prostate cancer using PACO45329 at dilution of 1:100.