

# FHL3 Antibody



PACO45324

---

## Product Information

**Size:**

50ul

**Reactivity:**

Human

**Source:**

Rabbit

**Isotype:**

IgG

**Applications:**

ELISA, WB, IHC

**Recommended dilutions:**

ELISA:1:2000-1:10000, WB:1:1000-1:5000,  
IHC:1:20-1:200

**Protein Background:**

focal adhesion, muscle organ development.

**Gene ID:**

FHL3

**Uniprot**

Q13643

**Synonyms:**

Four and a half LIM domains protein 3 (FHL-3) (Skeletal muscle LIM-protein 2) (SLIM-2),  
FHL3, SLIM2

**Immunogen:**

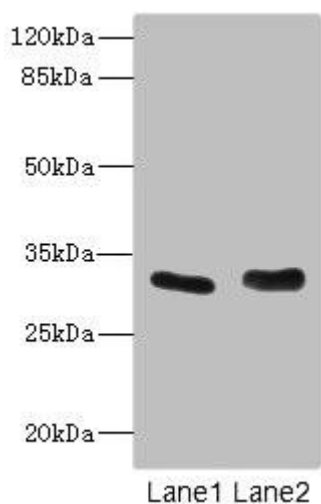
Recombinant Human Four and a half LIM domains protein 3 protein (1-280AA).

**Storage:**

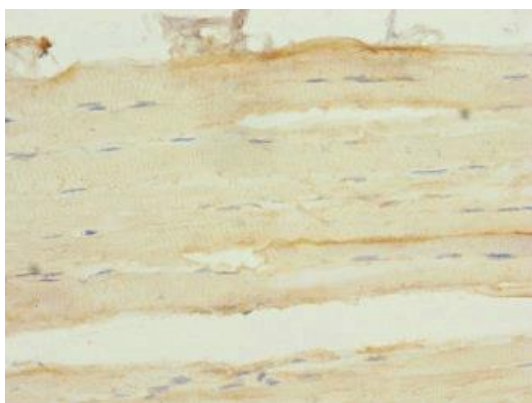
PBS with 0.02% sodium azide, 50% glycerol, pH7.3.

## Product Images

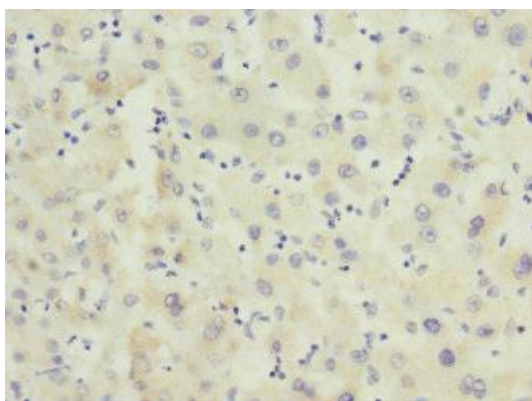
---



Western blot. All lanes: FHL3 antibody at 1.42 $\mu$ g/ml. Lane 1: Human placenta tissue. Lane 2: K562 whole cell lysate. Secondary: Goat polyclonal to rabbit IgG at 1/10000 dilution. Predicted band size: 31 kDa. Observed band size: 31 kDa.



Immunohistochemistry of paraffin-embedded human skeletal muscle tissue using PACO45324 at dilution of 1:100.



Immunohistochemistry of paraffin-embedded human liver tissue using PACO45324 at dilution of 1:100.