

FHL3 Antibody



PACO45323

Product Information

Size:

50ul

Reactivity:

Human

Source:

Rabbit

Isotype:

IgG

Applications:

ELISA, IHC

Recommended dilutions:

ELISA:1:2000-1:10000, IHC:1:20-1:200

Protein Background:

focal adhesion, muscle organ development.

Gene ID:

FHL3

Uniprot

Q13643

Synonyms:

Four and a half LIM domains protein 3 (FHL-3) (Skeletal muscle LIM-protein 2) (SLIM-2), FHL3, SLIM2

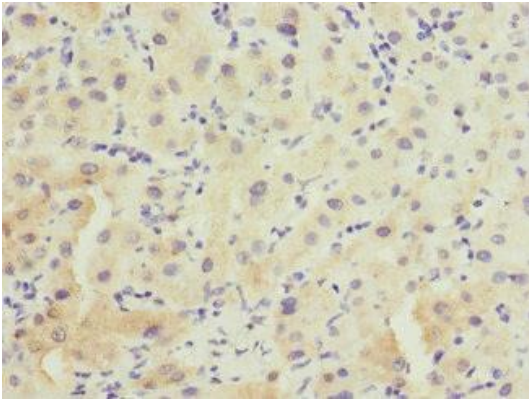
Immunogen:

Recombinant Human Four and a half LIM domains protein 3 protein (1-280AA).

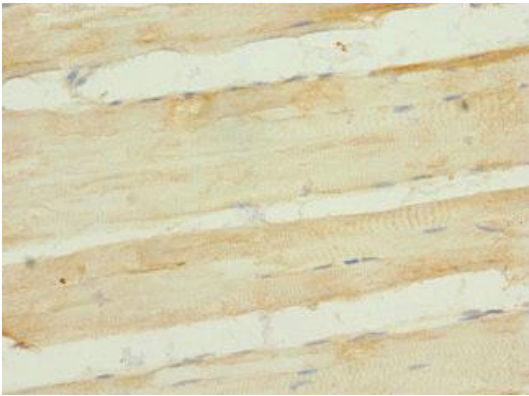
Storage:

PBS with 0.02% sodium azide, 50% glycerol, pH7.3.

Product Images



Immunohistochemistry of paraffin-embedded human liver tissue using PACO45323 at dilution of 1:100.



Immunohistochemistry of paraffin-embedded human skeletal muscle tissue using PACO45323 at dilution of 1:100.