

Product Information

Size:

50ul

Reactivity:

Human

Source:

Rabbit

Isotype:

IgG

Applications:

ELISA, IHC

Recommended dilutions:

ELISA:1:2000-1:10000, IHC:1:20-1:200

Protein Background:

Promotes adhesion of endothelial cells through interaction with the alpha-v/beta-3 integrin receptor. Inhibits formation of vascular-like structures. May be involved in regulation of vascular morphogenesis of remodeling in embryonic development.

Gene ID:

EDIL3

Uniprot

O43854

Synonyms:

EGF-like repeat and discoidin I-like domain-containing protein 3 (Developmentally-regulated endothelial cell locus 1 protein) (Integrin-binding protein DEL1), EDIL3, DEL1

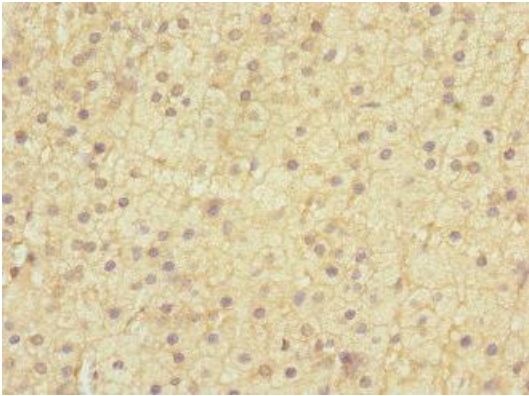
Immunogen:

Recombinant Human EGF-like repeat and discoidin I-like domain-containing protein 3 protein (60-300AA).

Storage:

PBS with 0.02% sodium azide, 50% glycerol, pH7.3.

Product Images



Immunohistochemistry of paraffin-embedded human adrenal gland tissue using PACO45321 at dilution of 1:100.