

CD320 Antibody



PACO45310

Product Information

Size:

50ul

Reactivity:

Human

Source:

Rabbit

Isotype:

IgG

Applications:

ELISA, IHC

Recommended dilutions:

ELISA:1:2000-1:10000, IHC:1:20-1:200

Protein Background:

Germinal center-B (GC-B) cells differentiate into memory B-cells and plasma cells (PC) through interaction with T-cells and follicular dendritic cells (FDC). CD320 augments the proliferation of PC precursors generated by IL-10. Receptor for the cellular uptake of transcobalamin bound cobalamin.

Gene ID:

CD320

Uniprot

Q9NPF0

Synonyms:

CD320 antigen (8D6 antigen) (FDC-signaling molecule 8D6) (FDC-SM-8D6) (Transcobalamin receptor) (TCbIR) (CD antigen CD320), CD320, 8D6A

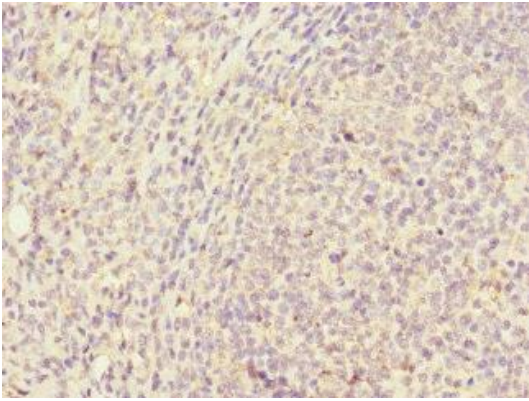
Immunogen:

Recombinant Human CD320 antigen protein (36-229AA).

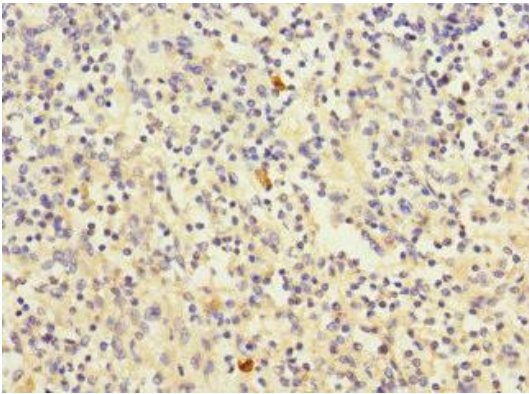
Storage:

PBS with 0.02% sodium azide, 50% glycerol, pH7.3.

Product Images



Immunohistochemistry of paraffin-embedded human tonsil tissue using PACO45310 at dilution of 1:100.



Immunohistochemistry of paraffin-embedded human spleen tissue using PACO45310 at dilution of 1:100.