

Product Information

Size:

50ul

Reactivity:

Human

Source:

Rabbit

Isotype:

IgG

Applications:

ELISA, IHC

Recommended dilutions:

ELISA:1:2000-1:10000, IHC:1:20-1:200

Protein Background:

Mitochondrial GTPase that mediates the disassembly of ribosomes from messenger RNA at the termination of mitochondrial protein biosynthesis. Acts in collaboration with MRRF. GTP hydrolysis follows the ribosome disassembly and probably occurs on the ribosome large subunit. Not involved in the GTP-dependent ribosomal translocation step during translation elongation.

Gene ID:

GFM2

Uniprot

Q969S9

Synonyms:

Ribosome-releasing factor 2, mitochondrial (RRF2mt) (Elongation factor G 2, mitochondrial) (EF-G2mt) (mEF-G 2) (Elongation factor G2) (hEFG2), GFM2, EFG2

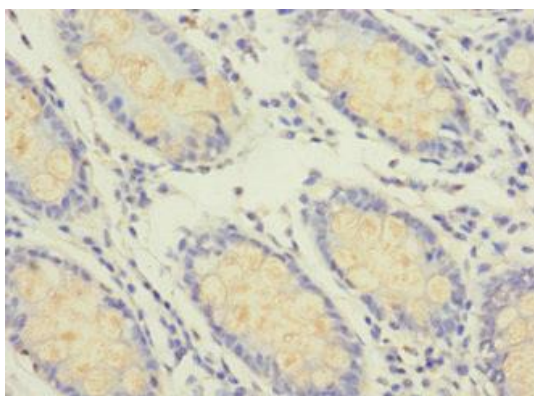
Immunogen:

Recombinant Human Ribosome-releasing factor 2, mitochondrial protein (520-779AA).

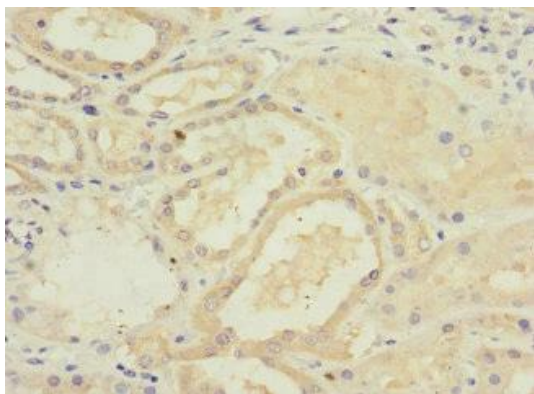
Storage:

PBS with 0.02% sodium azide, 50% glycerol, pH7.3.

Product Images



Immunohistochemistry of paraffin-embedded human colon cancer using PACO45309 at dilution of 1:100.



Immunohistochemistry of paraffin-embedded human kidney tissue using PACO45309 at dilution of 1:100.