

PACO45304

Product Information

Size:

50ul

Reactivity:

Human, Rat

Source:

Rabbit

Isotype:

IgG

Applications:

ELISA, WB, IHC

Recommended dilutions:

ELISA:1:2000-1:10000, WB:1:1000-1:5000,
IHC:1:20-1:200

Protein Background:

Pseudokinase which, in complex with CAB39/MO25 (CAB39/MO25alpha or CAB39L/MO25beta), binds to and activates STK11/LKB1. Adopts a closed conformation typical of active protein kinases and binds STK11/LKB1 as a pseudosubstrate, promoting conformational change of STK11/LKB1 in an active conformation.

Gene ID:

STRADA

Uniprot

Q7RTN6

Synonyms:

STE20-related kinase adapter protein alpha (STRAD alpha) (STE20-related adapter protein) (Serologically defined breast cancer antigen NY-BR-96), STRADA, LYK5 STRAD

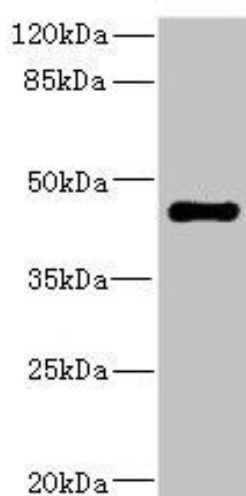
Immunogen:

Recombinant Human STE20-related kinase adapter protein α protein (25-210AA).

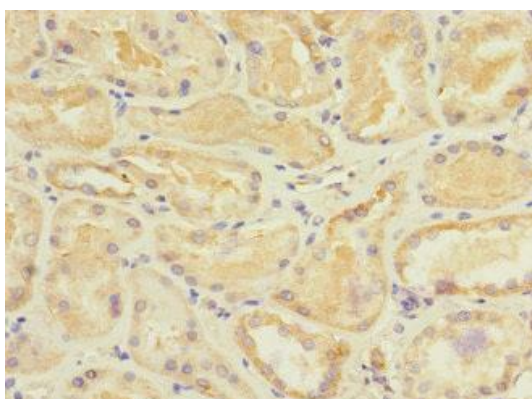
Storage:

PBS with 0.02% sodium azide, 50% glycerol, pH7.3.

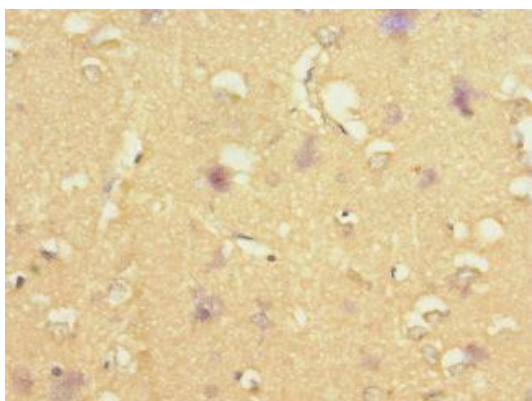
Product Images



Western blot. All lanes: STRADA antibody IgG at 1.98 μ g/ml + Rat heart tissue. Secondary. Goat polyclonal to rabbit IgG at 1/10000 dilution. Predicted band size: 49, 39, 44, 34, 42, 35 kDa. Observed band size: 49 kDa.



Immunohistochemistry of paraffin-embedded human kidney tissue using PACO45304 at dilution of 1:100.



Immunohistochemistry of paraffin-embedded human brain tissue using PACO45304 at dilution of 1:100.