

PACO45303

Product Information

Size:

50ul

Reactivity:

Human

Source:

Rabbit

Isotype:

IgG

Applications:

ELISA, IHC

Recommended dilutions:

ELISA:1:2000-1:10000, IHC:1:20-1:200

Protein Background:

Pseudokinase which, in complex with CAB39/MO25 (CAB39/MO25alpha or CAB39L/MO25beta), binds to and activates STK11/LKB1. Adopts a closed conformation typical of active protein kinases and binds STK11/LKB1 as a pseudosubstrate, promoting conformational change of STK11/LKB1 in an active conformation.

Gene ID:

STRADA

Uniprot

Q7RTN6

Synonyms:

STE20-related kinase adapter protein alpha (STRAD alpha) (STE20-related adapter protein) (Serologically defined breast cancer antigen NY-BR-96), STRADA, LYK5 STRAD

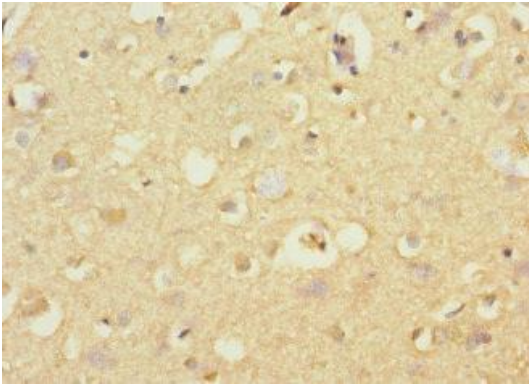
Immunogen:

Recombinant Human STE20-related kinase adapter protein α protein (25-210AA).

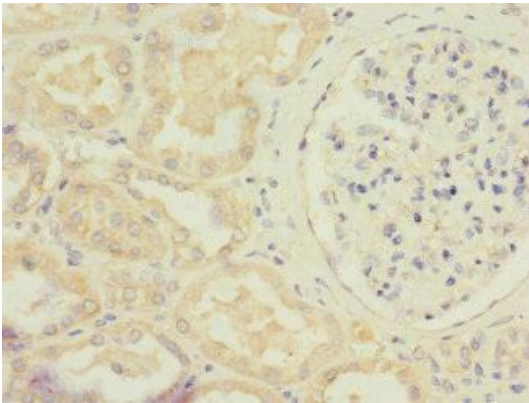
Storage:

PBS with 0.02% sodium azide, 50% glycerol, pH7.3.

Product Images



Immunohistochemistry of paraffin-embedded human brain tissue using PACO45303 at dilution of 1:100.



Immunohistochemistry of paraffin-embedded human kidney tissue using PACO45303 at dilution of 1:100.