

## Product Information

**Size:**

50ul

**Reactivity:**

Human

**Source:**

Rabbit

**Isotype:**

IgG

**Applications:**

ELISA, IHC

**Recommended dilutions:**

ELISA:1:2000-1:10000, IHC:1:20-1:200

**Protein Background:**

Potential role in vesicular protein trafficking, mainly in the early secretory pathway. May act as a cargo receptor at the luminal side for incorporation of secretory cargo molecules into transport vesicles and may be involved in vesicle coat formation at the cytoplasmic side.

**Gene ID:**

TMED1

**Uniprot**

Q13445

**Synonyms:**

Transmembrane emp24 domain-containing protein 1 (Interleukin-1 receptor-like 1 ligand) (Putative T1/ST2 receptor-binding protein) (p24 family protein gamma-1) (Tp24) (p24gamma1), TMED1, IL1RL1L IL1RL1LG

**Immunogen:**

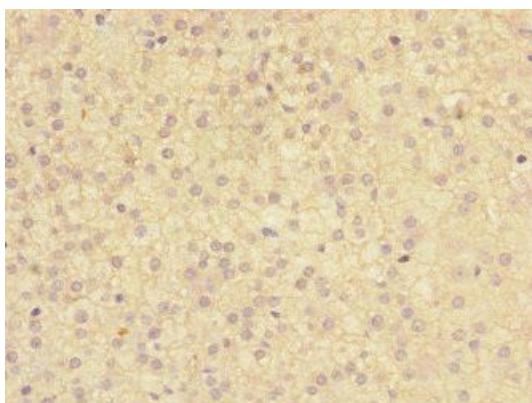
Recombinant Human Transmembrane emp24 domain-containing protein 1 protein (24-194AA).

**Storage:**

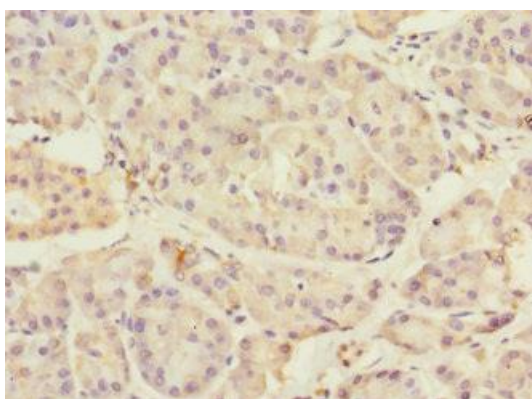
PBS with 0.02% sodium azide, 50% glycerol, pH7.3.

## Product Images

---



Immunohistochemistry of paraffin-embedded human adrenal gland tissue using PACO45274 at dilution of 1:100.



Immunohistochemistry of paraffin-embedded human pancreatic tissue using PACO45274 at dilution of 1:100.