

# SAV1 Antibody



PACO45271

---

## Product Information

**Size:**

50ul

**Reactivity:**

Human, Mouse

**Source:**

Rabbit

**Isotype:**

IgG

**Applications:**

ELISA, WB, IHC, IF, IP

**Recommended dilutions:**

ELISA:1:2000-1:10000, WB:1:500-1:2000,  
IHC:1:20-1:200, IF:1:50-1:200, IP:1:200-  
1:2000,

**Protein Background:****Gene ID:**

SAV1

**Uniprot**

Q9H4B6

**Synonyms:**

Protein salvador homolog 1 (45 kDa WW domain protein) (hWW45), SAV1, WW45

**Immunogen:**

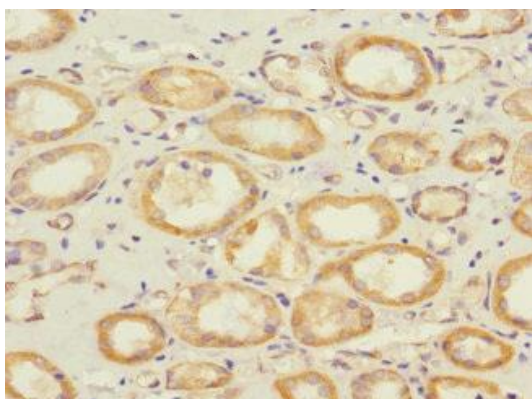
Recombinant Human Protein salvador homolog 1 protein (1-210AA).

**Storage:**

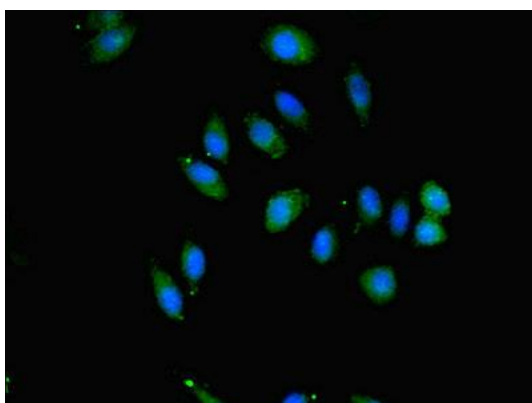
PBS with 0.02% sodium azide, 50% glycerol, pH7.3.

## Product Images

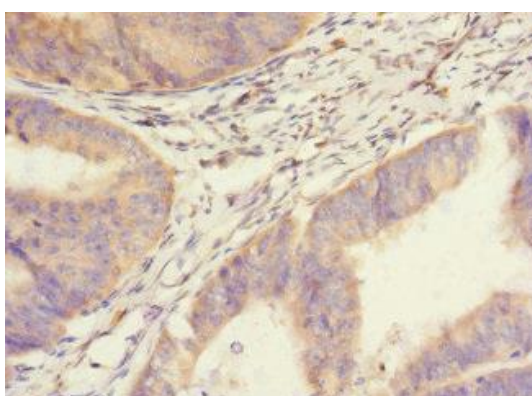
---



Immunohistochemistry of paraffin-embedded human kidney tissue using PACO45271 at dilution of 1:100.



Immunofluorescent analysis of A549 cells using PACO45271 at dilution of 1:100 and Alexa Fluor 488-conjugated AffiniPure Goat Anti-Rabbit IgG(H+L).



Immunohistochemistry of paraffin-embedded human endometrial cancer using PACO45271 at dilution of 1:100.