

Product Information

Size:

50ul

Reactivity:

Human, Mouse

Source:

Rabbit

Isotype:

IgG

Applications:

ELISA, WB, IHC

Recommended dilutions:

ELISA:1:2000-1:10000, WB:1:1000-1:5000,
IHC:1:20-1:200

Protein Background:

Plays a role in the import of cytosolically synthesized preproteins into mitochondria. Binds the mature portion of precursor proteins. Interacts with cellular components, and possesses weak ATPase activity. May be a chaperone-like protein that helps to keep newly synthesized precursors in an unfolded import compatible state.

Gene ID:

TOMM34

Uniprot

Q15785

Synonyms:

Mitochondrial import receptor subunit TOM34 (hTom34) (Translocase of outer membrane 34 kDa subunit), TOMM34, URCC3

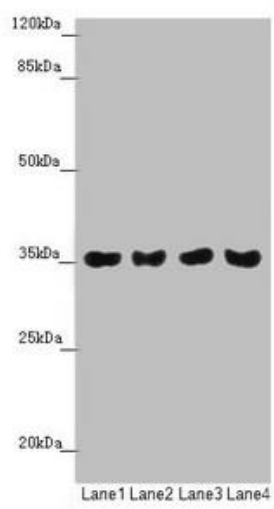
Immunogen:

Recombinant Human Mitochondrial import receptor subunit TOM34 protein (1-309AA).

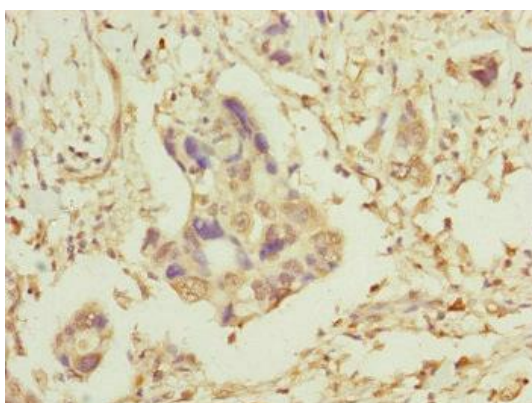
Storage:

PBS with 0.02% sodium azide, 50% glycerol, pH7.3.

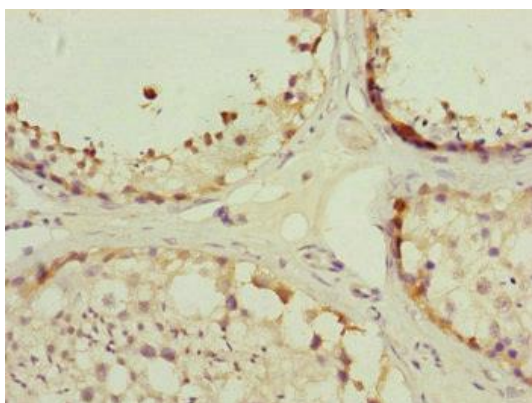
Product Images



Western blot. All lanes: TOMM34 antibody at 1.42 μ g/ml. Lane 1: Mouse gonadal tissue. Lane 2: A549 whole cell lysate. Lane 3: PC-3 whole cell lysate. Lane 4: A375 whole cell lysate. Secondary. Goat polyclonal to rabbit IgG at 1/10000 dilution. Predicted band size: 35 kDa. Observed band size: 35 kDa.



Immunohistochemistry of paraffin-embedded human pancreatic cancer using PACO45171 at dilution of 1:100.



Immunohistochemistry of paraffin-embedded human testis tissue using PACO45171 at dilution of 1:100.