

# SAMM50 Antibody



PACO45167

---

## Product Information

**Size:**

50ul

**Reactivity:**

Human, Mouse

**Source:**

Rabbit

**Isotype:**

IgG

**Applications:**

ELISA, WB, IHC

**Recommended dilutions:**

ELISA:1:2000-1:10000, WB:1:1000-1:5000,  
IHC:1:20-1:200

**Protein Background:**

Plays a crucial role in the maintenance of the structure of mitochondrial cristae and the proper assembly of the mitochondrial respiratory chain complexes. Required for the assembly of TOMM40 into the TOM complex.

**Gene ID:**

SAMM50

**Uniprot**

Q9Y512

**Synonyms:**

Sorting and assembly machinery component 50 homolog (Transformation-related gene 3 protein) (TRG-3), SAMM50, SAM50

**Immunogen:**

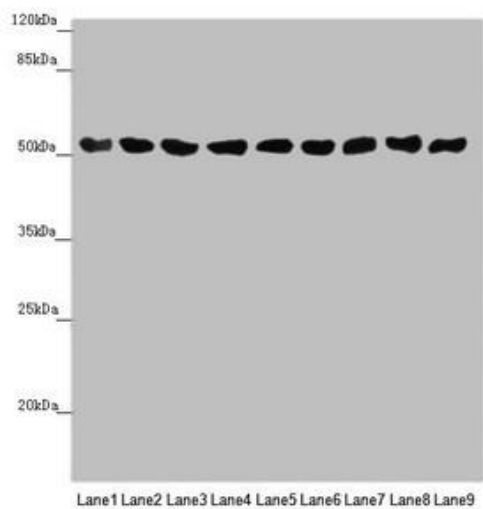
Recombinant Human Sorting and assembly machinery component 50 homolog protein (1-220AA).

**Storage:**

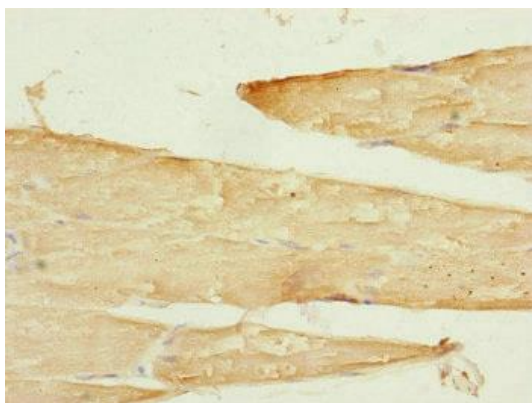
PBS with 0.02% sodium azide, 50% glycerol, pH7.3.

## Product Images

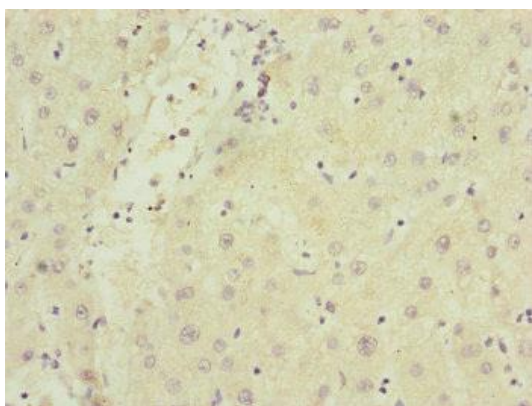
---



Western blot. All lanes: SAMM50 antibody at 0.98 $\mu$ g/ml. Lane 1: Mouse gonadal tissue. Lane 2: A375 whole cell lysate. Lane 3: A431 whole cell lysate. Lane 4: 293T whole cell lysate. Lane 5: Hela whole cell lysate. Lane 6: A549 whole cell lysate. Lane 7: HepG2 whole cell lysate. Lane 8: U251 whole cell lysate. Lane 9: LO2 whole cell lysate. Secondary. Goat polyclonal to rabbit IgG at 1/10000 dilution. Predicted band size: 52 kDa. Observed band size: 52 kDa.



Immunohistochemistry of paraffin-embedded human skeletal muscle tissue using PACO45167 at dilution of 1:100.



Immunohistochemistry of paraffin-embedded human liver cancer using PACO45167 at dilution of 1:100.