

PACO45160

---

## Product Information

**Size:**

50ul

**Reactivity:**

Human

**Source:**

Rabbit

**Isotype:**

IgG

**Applications:**

ELISA, WB, IHC

**Recommended dilutions:**

ELISA:1:2000-1:10000, WB:1:1000-1:5000,  
IHC:1:20-1:200

**Protein Background:**

Cleaves presequences (transit peptides) from mitochondrial protein precursors.

**Gene ID:**

PMPCB

**Uniprot**

O75439

**Synonyms:**

Mitochondrial-processing peptidase subunit beta (EC 3.4.24.64) (Beta-MPP) (P-52),  
PMPCB, MPPB

**Immunogen:**

Recombinant Human Mitochondrial-processing peptidase subunit &beta; protein (110-380AA).

**Storage:**

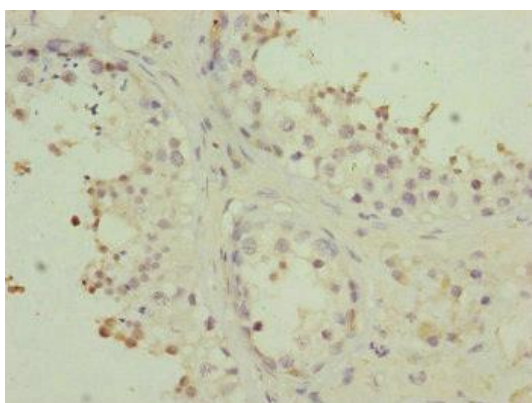
PBS with 0.02% sodium azide, 50% glycerol, pH7.3.

## Product Images

---



Western blot. All lanes: PMPCB antibody at 2.3 $\mu$ g/ml + HepG2 whole cell lysate. Secondary. Goat polyclonal to rabbit IgG at 1/10000 dilution. Predicted band size: 55 kDa. Observed band size: 55 kDa.



Immunohistochemistry of paraffin-embedded human testis tissue using PACO45160 at dilution of 1:100.