

TIMM10B Antibody



PACO45135

Product Information

Size:

50ul

Reactivity:

Human

Source:

Rabbit

Isotype:

IgG

Applications:

ELISA, IHC, IF

Recommended dilutions:

ELISA:1:2000-1:10000, IHC:1:20-1:200,
IF:1:50-1:200

Protein Background:

Component of the TIM22 complex, a complex that mediates the import and insertion of multi-pass transmembrane proteins into the mitochondrial inner membrane. The TIM22 complex forms a twin-pore translocase that uses the membrane potential as the external driving force. In the TIM22 complex, it may act as a docking point for the soluble 70 kDa complex that guides the target proteins in transit through the aqueous mitochondrial intermembrane space.

Gene ID:

TIMM10B

Uniprot

Q9Y5J6

Synonyms:

Mitochondrial import inner membrane translocase subunit Tim10 B (Fracture callus protein 1) (FxC1) (Mitochondrial import inner membrane translocase subunit Tim9 B) (TIMM10B) (Tim10b), TIMM10B, FXC1 TIM9B TIMM9B

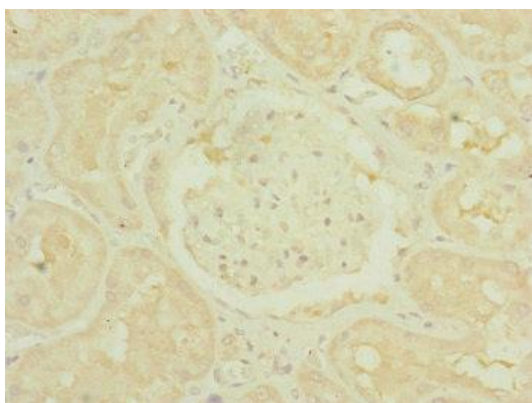
Immunogen:

Recombinant Human Mitochondrial import inner membrane translocase subunit Tim10 B protein (1-103AA).

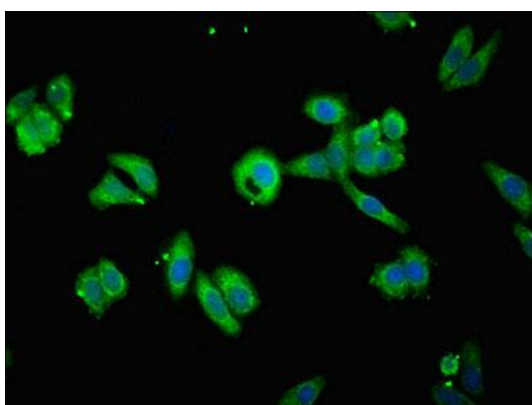
Storage:

PBS with 0.02% sodium azide, 50% glycerol, pH7.3.

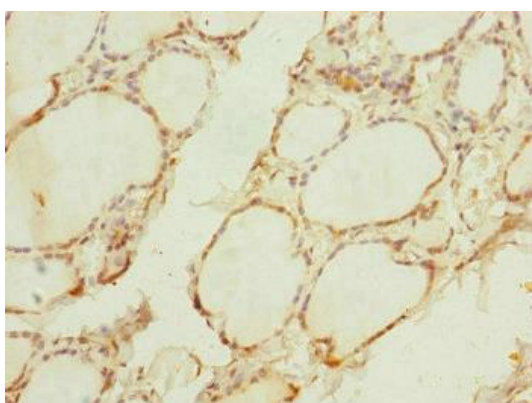
Product Images



Immunohistochemistry of paraffin-embedded human kidney tissue using PACO45135 at dilution of 1:100.



Immunofluorescent analysis of HepG2 cells using PACO45135 at dilution of 1:100 and Alexa Fluor 488-conjugated AffiniPure Goat Anti-Rabbit IgG(H+L).



Immunohistochemistry of paraffin-embedded human thyroid tissue using PACO45135 at dilution of 1:100.