

RPP25L Antibody



PACO45124

Product Information

Size:

50ul

Reactivity:

Human, Mouse

Source:

Rabbit

Isotype:

IgG

Applications:

ELISA, WB, IHC

Recommended dilutions:

ELISA:1:2000-1:10000, WB:1:1000-1:5000,
IHC:1:20-1:200

Protein Background:

May be a component of ribonuclease P or MRP.

Gene ID:

RPP25L

Uniprot

Q8N5L8

Synonyms:

Ribonuclease P protein subunit p25-like protein (RNase P protein subunit-like p25) (Rpp25-like protein), RPP25L, C9orf23

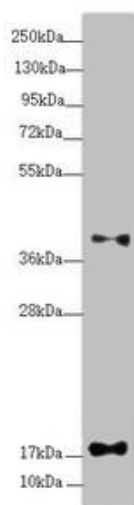
Immunogen:

Recombinant Human Ribonuclease P protein subunit p25-like protein (1-163AA).

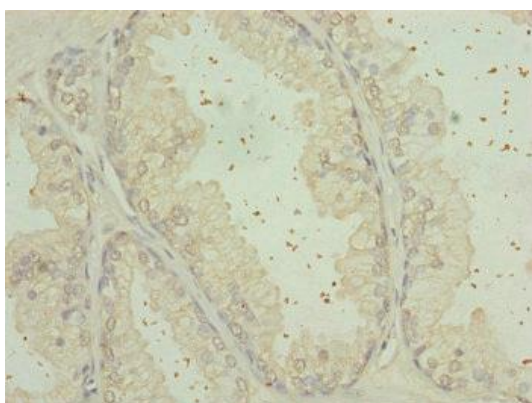
Storage:

PBS with 0.02% sodium azide, 50% glycerol, pH7.3.

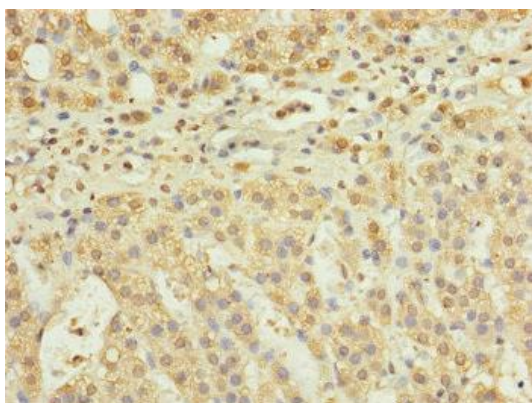
Product Images



Western blot. All lanes: RPP25L antibody at 0.9 $\mu\text{g/ml}$ + Mouse heart tissue. Secondary. Goat polyclonal to rabbit IgG at 1/10000 dilution. Predicted band size: 18 kDa. Observed band size: 18, 40 kDa.



Immunohistochemistry of paraffin-embedded human prostate cancer using PACO45124 at dilution of 1:100.



Immunohistochemistry of paraffin-embedded human adrenal gland tissue using PACO45124 at dilution of 1:100.