

SFI1 Antibody



PACO45114

Product Information

Size:

50ul

Reactivity:

Human

Source:

Rabbit

Isotype:

IgG

Applications:

ELISA, WB, IHC

Recommended dilutions:

ELISA:1:2000-1:10000, WB:1:1000-1:5000,
IHC:1:20-1:200

Protein Background:

Plays a role in the dynamic structure of centrosome-associated contractile fibers via its interaction with CETN2.

Gene ID:

SFI1

Uniprot

A8K8P3

Synonyms:

Protein SFI1 homolog (hSFI1), SFI1, KIAA0542

Immunogen:

Recombinant Human Protein SFI1 homolog protein (1003-1242AA).

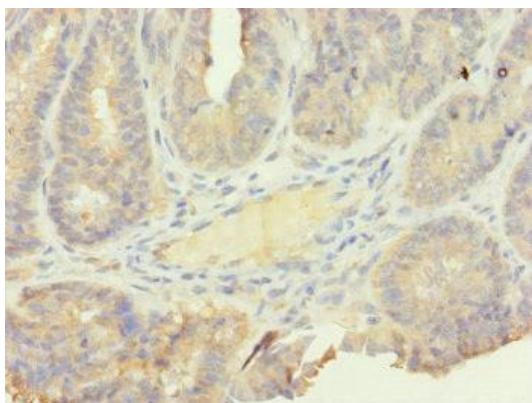
Storage:

PBS with 0.02% sodium azide, 50% glycerol, pH7.3.

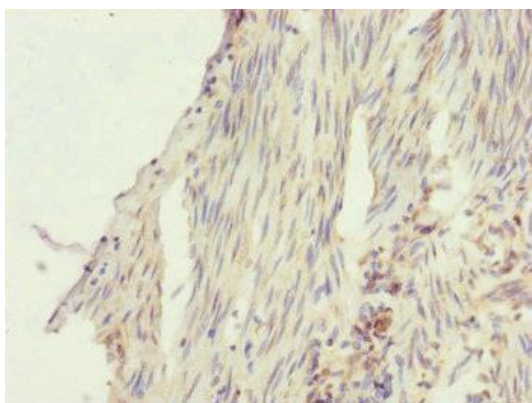
Product Images



Western blot. All lanes: SF11 antibody at 2.9 $\mu\text{g/ml}$. Lane 1: A549 whole cell lysate. Lane 2: HepG2 whole cell lysate. Secondary. Goat polyclonal to rabbit IgG at 1/10000 dilution. Predicted band size: 148, 144, 139, 122, 118, 142, 137 kDa. Observed band size: 148, 85 kDa.



Immunohistochemistry of paraffin-embedded human endometrial cancer using PACO45114 at dilution of 1:100.



Immunohistochemistry of paraffin-embedded human bladder cancer using PACO45114 at dilution of 1:100.