

PACO45108

Product Information

Size:

50ul

Reactivity:

Human, Mouse

Source:

Rabbit

Isotype:

IgG

Applications:

ELISA, WB, IHC, IP

Recommended dilutions:

ELISA:1:2000-1:10000, WB:1:1000-1:5000,
IHC:1:20-1:200, IP:1:200-1:2000

Protein Background:

Hydrolysis of 6-phosphogluconolactone to 6-phosphogluconate.

Gene ID:

PGLS

Uniprot

O95336

Synonyms:

6-phosphogluconolactonase (6PGL) (EC 3.1.1.31), PGLS

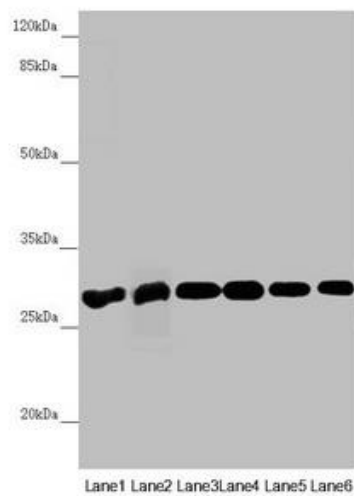
Immunogen:

Recombinant Human 6-phosphogluconolactonase protein (1-258AA).

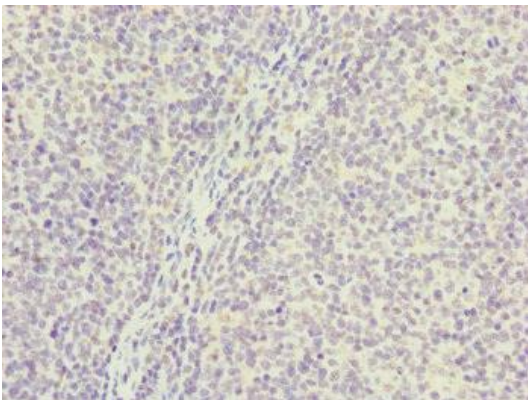
Storage:

PBS with 0.02% sodium azide, 50% glycerol, pH7.3.

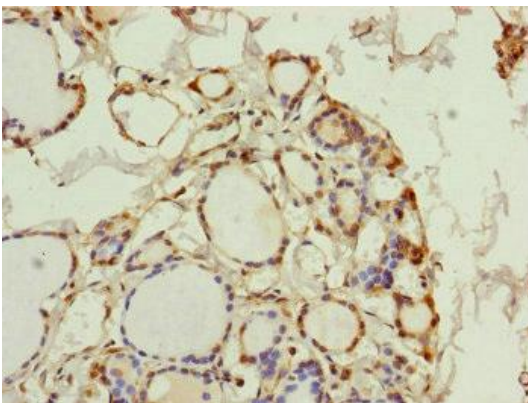
Product Images



Western blot. All lanes: PGLS antibody at 3.94 μ g/ml. Lane 1: Mouse liver tissue. Lane 2: Mouse brain tissue. Lane 3: U251 whole cell lysate. Lane 4: THP-1 whole cell lysate. Lane 5: HepG2 whole cell lysate. Lane 6: HeLa whole cell lysate. Secondary. Goat polyclonal to rabbit IgG at 1/10000 dilution. Predicted band size: 28 kDa. Observed band size: 28 kDa.



Immunohistochemistry of paraffin-embedded human tonsil tissue using PACO45108 at dilution of 1:100.



Immunohistochemistry of paraffin-embedded human thyroid tissue using PACO45108 at dilution of 1:100.