

PACO45103

Product Information

Size:

50ul

Reactivity:

Human, Mouse

Source:

Rabbit

Isotype:

IgG

Applications:

ELISA, WB, IHC, IF

Recommended dilutions:

ELISA:1:2000-1:10000, WB:1:500-1:2000,
IHC:1:20-1:200, IF:1:50-1:200

Protein Background:

Contributes to mitotic spindle assembly, maintenance of centrosome integrity and completion of cytokinesis as part of the HAUS augmin-like complex.

Gene ID:

HAUS8

Uniprot

Q9BT25

Synonyms:

HAUS augmin-like complex subunit 8 (HEC1/NDC80-interacting centrosome-associated protein 1) (Sarcoma antigen NY-SAR-48), HAUS8, HICE1

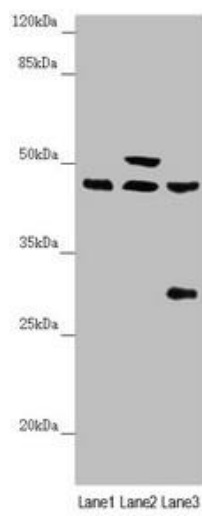
Immunogen:

Recombinant Human HAUS augmin-like complex subunit 8 protein (166-410AA).

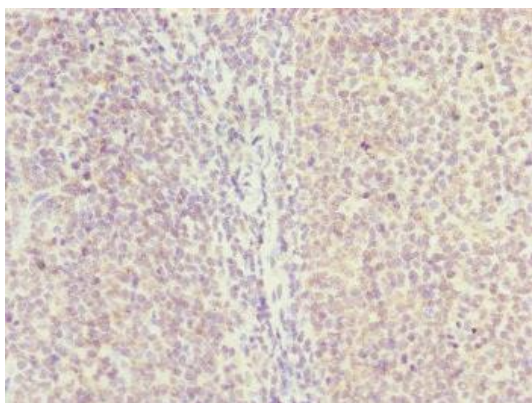
Storage:

PBS with 0.02% sodium azide, 50% glycerol, pH7.3.

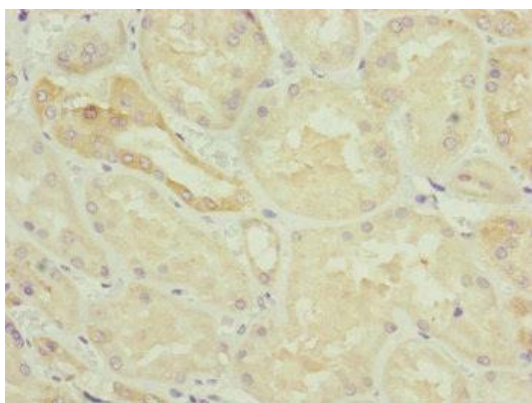
Product Images



Western blot. All lanes: HAUS8 antibody at 2.35 $\mu\text{g/ml}$. Lane 1: Mouse kidney tissue. Lane 2: Mouse brain tissue. Lane 3: A549 whole cell lysate. Secondary: Goat polyclonal to rabbit IgG at 1/10000 dilution. Predicted band size: 45, 39 kDa. Observed band size: 45, 50, 28 kDa.



Immunohistochemistry of paraffin-embedded human tonsil tissue using PACO45103 at dilution of 1:100.



Immunohistochemistry of paraffin-embedded human kidney tissue using PACO45103 at dilution of 1:100.