

PACO45086

Product Information

Size:

50ul

Reactivity:

Human

Source:

Rabbit

Isotype:

IgG

Applications:

ELISA, IHC

Recommended dilutions:

ELISA:1:2000-1:10000, IHC:1:20-1:200

Protein Background:

Part of intraflagellar transport (IFT) particles involved in ciliary process assembly. May play a role in the trafficking of ciliary membrane proteins from the Golgi complex to the cilium. Also involved in autophagy since it is required for trafficking of ATG16L and the expansion of the autophagic compartment.

Gene ID:

IFT20

Uniprot

Q8IY31

Synonyms:

Intraflagellar transport protein 20 homolog (hIFT20), IFT20

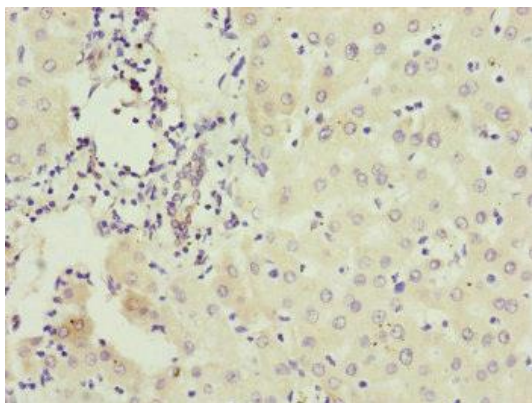
Immunogen:

Recombinant Human Intraflagellar transport protein 20 homolog protein (1-132AA).

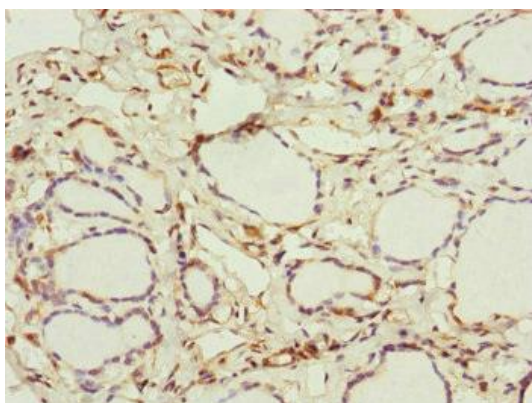
Storage:

PBS with 0.02% sodium azide, 50% glycerol, pH7.3.

Product Images



Immunohistochemistry of paraffin-embedded human liver cancer using PACO45086 at dilution of 1:100.



Immunohistochemistry of paraffin-embedded human thyroid tissue using PACO45086 at dilution of 1:100.