

PACO45060

Product Information

Size:

50ul

Reactivity:

Human

Source:

Rabbit

Isotype:

IgG

Applications:

ELISA, WB, IHC

Recommended dilutions:

ELISA:1:2000-1:10000, WB:1:1000-1:5000,
IHC:1:20-1:200

Protein Background:

Component of the CENPA-CAD (nucleosome distal) complex, a complex recruited to centromeres which is involved in assembly of kinetochore proteins, mitotic progression and chromosome segregation. May be involved in incorporation of newly synthesized CENPA into centromeres via its interaction with the CENPA-NAC complex. Acts in coordination with CASC5/KNL1 to recruit the NDC80 complex to the outer kinetochore.

Gene ID:

CENPK

Uniprot

Q9BS16

Synonyms:

Centromere protein K (CENP-K) (Interphase centromere complex protein 37) (Protein AF-5alpha) (p33), CENPK, ICEN37

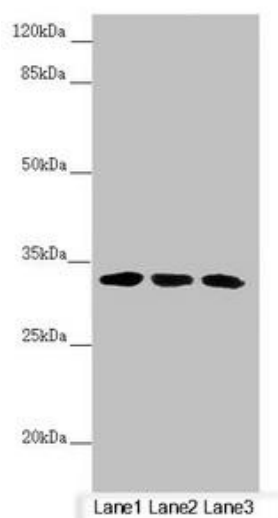
Immunogen:

Recombinant Human Centromere protein K protein (1-269AA).

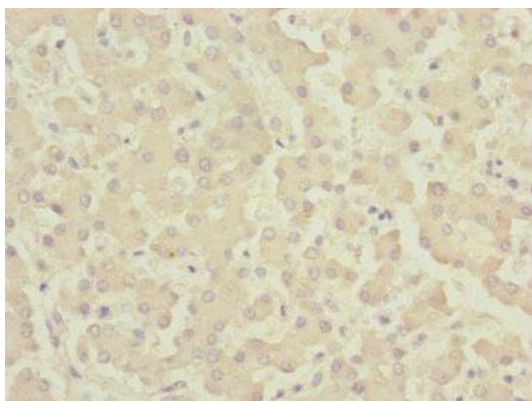
Storage:

PBS with 0.02% sodium azide, 50% glycerol, pH7.3.

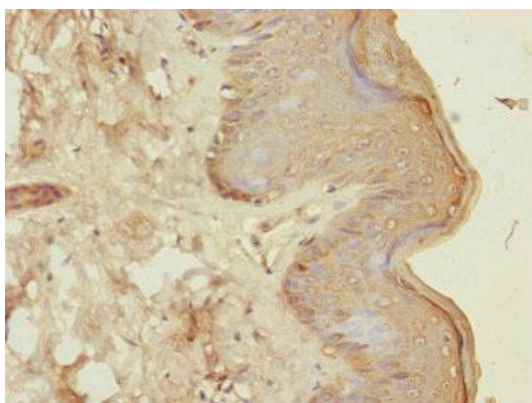
Product Images



Western blot. All lanes: CENPK antibody at 4.17 μ g/ml. Lane 1: PC-3 whole cell lysate. Lane 2: 293T whole cell lysate. Lane 3: Hela whole cell lysate. Secondary. Goat polyclonal to rabbit IgG at 1/10000 dilution. Predicted band size: 32 kDa. Observed band size: 32 kDa.



Immunohistochemistry of paraffin-embedded human liver tissue using PACO45060 at dilution of 1:100.



Immunohistochemistry of paraffin-embedded human skin tissue using PACO45060 at dilution of 1:100.