

Product Information

Size:

50ul

Reactivity:

Human

Source:

Rabbit

Isotype:

IgG

Applications:

ELISA, WB, IHC, IF

Recommended dilutions:

ELISA:1:2000-1:10000, WB:1:500-1:2000,
IHC:1:20-1:200, IF:1:50-1:200

Protein Background:

Component of the distal appendage region of the centriole involved in the initiation of primary cilium assembly. May collaborate with IFT20 in the trafficking of ciliary membrane proteins from the Golgi complex to the cilium during the initiation of primary cilium assembly.

Gene ID:

CEP83

Uniprot

Q9Y592

Synonyms:

Centrosomal protein of 83 kDa (Cep83) (Coiled-coil domain-containing protein 41) (Renal carcinoma antigen NY-REN-58), CEP83, CCDC41

Immunogen:

Recombinant Human Centrosomal protein of 83 kDa protein (34-260AA).

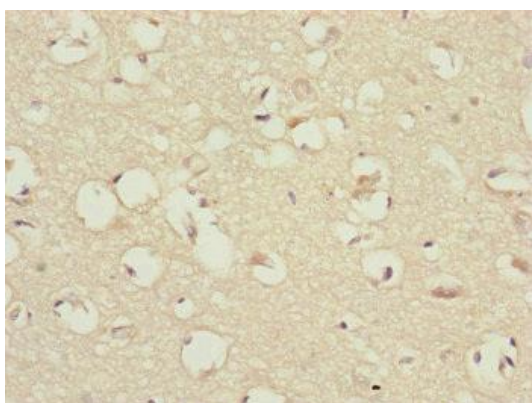
Storage:

PBS with 0.02% sodium azide, 50% glycerol, pH7.3.

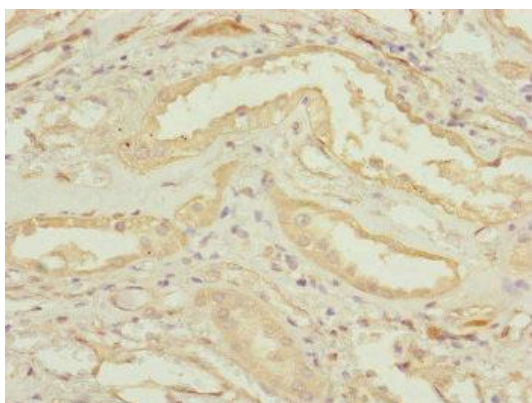
Product Images



Western blot. All lanes: CEP83 antibody at 2.41 $\mu\text{g/ml}$ + Raji whole cell lysate. Secondary. Goat polyclonal to rabbit IgG at 1/10000 dilution. Predicted band size: 83, 68 kDa. Observed band size: 83, 55 kDa.



Immunohistochemistry of paraffin-embedded human brain tissue using PACO45049 at dilution of 1:100.



Immunohistochemistry of paraffin-embedded human kidney tissue using PACO45049 at dilution of 1:100.