

# TMEM43 Antibody



PACO45039

---

## Product Information

**Size:**

50ul

**Reactivity:**

Human

**Source:**

Rabbit

**Isotype:**

IgG

**Applications:**

ELISA, IHC

**Recommended dilutions:**

ELISA:1:2000-1:10000, IHC:1:20-1:200

**Protein Background:**

May have an important role in maintaining nuclear envelope structure by organizing protein complexes at the inner nuclear membrane. Required for retaining emerin at the inner nuclear membrane.

**Gene ID:**

TMEM43

**Uniprot**

Q9BTV4

**Synonyms:**

Transmembrane protein 43 (Protein LUMA), TMEM43

**Immunogen:**

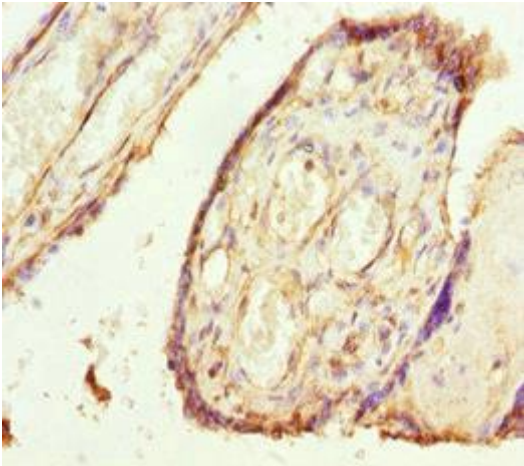
Recombinant Human Transmembrane protein 43 protein (80-310AA).

**Storage:**

PBS with 0.02% sodium azide, 50% glycerol, pH7.3.

## Product Images

---



Immunohistochemistry of paraffin-embedded human placenta tissue using PACO45039 at dilution of 1:100.