

KLHL7 Antibody



PACO45013

Product Information

Size:

50ul

Reactivity:

Human

Source:

Rabbit

Isotype:

IgG

Applications:

ELISA, IHC

Recommended dilutions:

ELISA:1:2000-1:10000, IHC:1:20-1:200

Protein Background:

Substrate-specific adapter of a BCR (BTB-CUL3-RBX1) E3 ubiquitin ligase complex. The BCR(KLHL7) complex acts by mediating ubiquitination and subsequent degradation of substrate proteins. Probably mediates 'Lys-48'-linked ubiquitination.

Gene ID:

KLHL7

Uniprot

Q8IXQ5

Synonyms:

Kelch-like protein 7, KLHL7

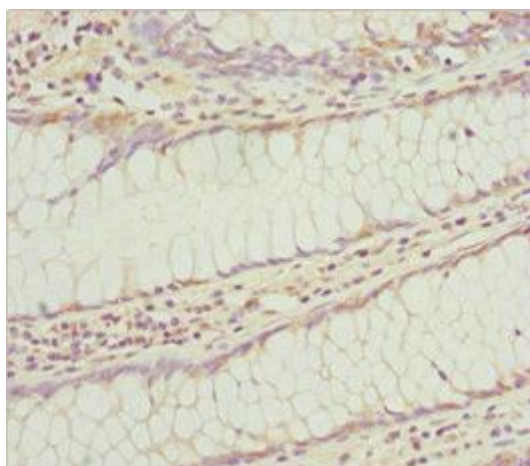
Immunogen:

Recombinant Human Kelch-like protein 7 protein (427-586AA).

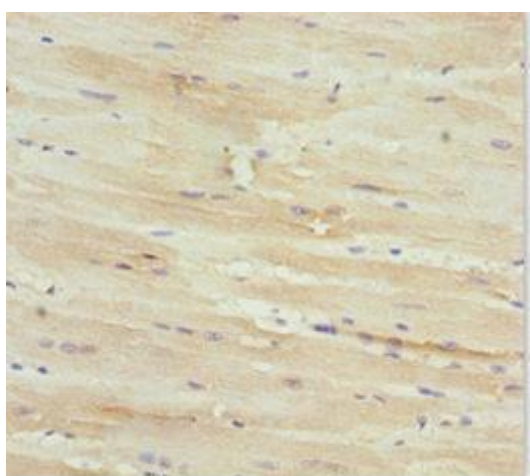
Storage:

PBS with 0.02% sodium azide, 50% glycerol, pH7.3.

Product Images



Immunohistochemistry of paraffin-embedded human colon cancer using PACO45013 at dilution of 1:100.



Immunohistochemistry of paraffin-embedded human heart tissue using PACO45013 at dilution of 1:100.