

GNB1L Antibody



PACO45004

Product Information

Size:

50ul

Reactivity:

Human, Mouse

Source:

Rabbit

Isotype:

IgG

Applications:

ELISA, WB, IHC

Recommended dilutions:

ELISA:1:2000-1:10000, WB:1:1000-1:5000,
IHC:1:20-1:200

Protein Background:

cytoplasmic side of plasma membrane, G-protein coupled receptor signaling pathway, intracellular signal transduction.

Gene ID:

GNB1L

Uniprot

Q9BYB4

Synonyms:

Guanine nucleotide-binding protein subunit beta-like protein 1 (G protein subunit beta-like protein 1) (DGCRK3) (WD repeat-containing protein 14) (WD40 repeat-containing protein deleted in VCFS) (WDVCF), GNB1L, GY2 KIAA1645 WDR14

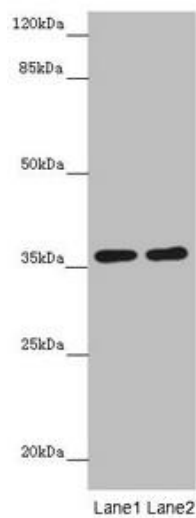
Immunogen:

Recombinant Human Guanine nucleotide-binding protein subunit beta-like protein 1 protein (1-327AA).

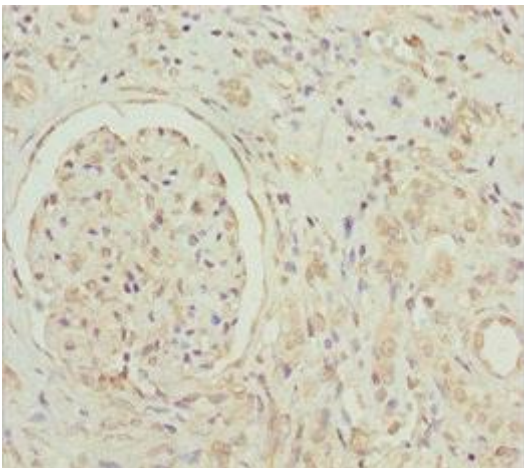
Storage:

PBS with 0.02% sodium azide, 50% glycerol, pH7.3.

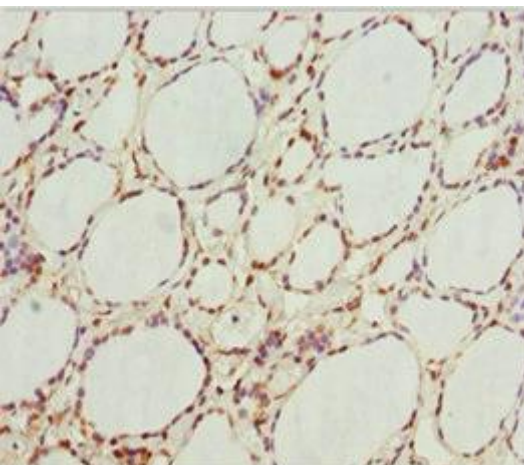
Product Images



Western blot. All lanes: GNB1L antibody at 3.69 μ g/ml. Lane 1: Mouse brain tissue. Lane 2: Jurkat whole cell lysate. Secondary: Goat polyclonal to rabbit IgG at 1/10000 dilution. Predicted band size: 36, 23 kDa. Observed band size: 36 kDa.



Immunohistochemistry of paraffin-embedded human kidney tissue using PACO45004 at dilution of 1:100.



Immunohistochemistry of paraffin-embedded human thyroid tissue using PACO45004 at dilution of 1:100.