

EFHC1 Antibody



PACO45002

Product Information

Size:

50ul

Reactivity:

Human

Source:

Rabbit

Isotype:

IgG

Applications:

ELISA, IHC

Recommended dilutions:

ELISA:1:2000-1:10000, IHC:1:20-1:200

Protein Background:

Necessary for radial and tangential cell migration during brain development, possibly acting as a regulator of cell morphology and process formation during migration. May enhance calcium influx through CACNA1E and stimulate programmed cell death.

Gene ID:

EFHC1

Uniprot

Q5JVL4

Synonyms:

EF-hand domain-containing protein 1 (Myoclonin-1), EFHC1

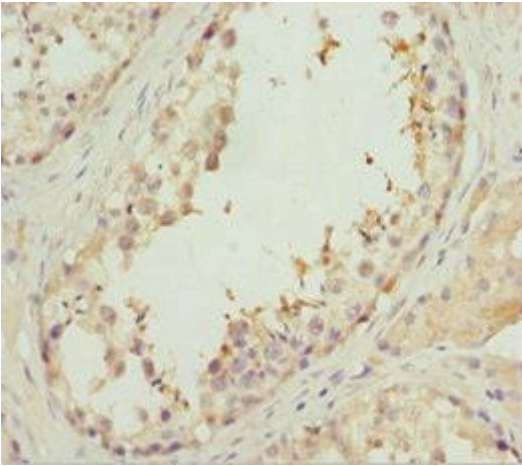
Immunogen:

Recombinant Human EF-hand domain-containing protein 1 protein (391-640AA).

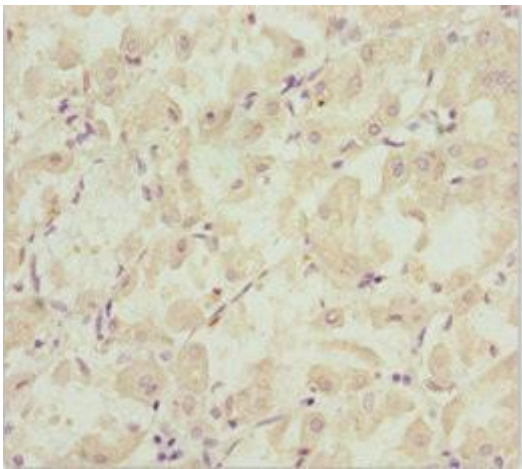
Storage:

PBS with 0.02% sodium azide, 50% glycerol, pH7.3.

Product Images



Immunohistochemistry of paraffin-embedded human testis tissue using PACO45002 at dilution of 1:100.



Immunohistochemistry of paraffin-embedded human gastric cancer using PACO45002 at dilution of 1:100.