

DDX11 Antibody



PACO45000

Product Information

Size:

50ul

Reactivity:

Human, Mouse

Source:

Rabbit

Isotype:

IgG

Applications:

ELISA, WB, IHC

Recommended dilutions:

ELISA:1:2000-1:10000, WB:1:1000-1:5000,
IHC:1:20-1:200

Protein Background:

Gene ID:

DDX11

Uniprot

Q96FC9

Synonyms:

ATP-dependent DNA helicase DDX11 (EC 3.6.4.12) (CHL1-related protein 1) (hCHLR1) (DEAD/H-box protein 11) (Keratinocyte growth factor-regulated gene 2 protein) (KRG-2), DDX11, CHL1 CHLR1 KRG2

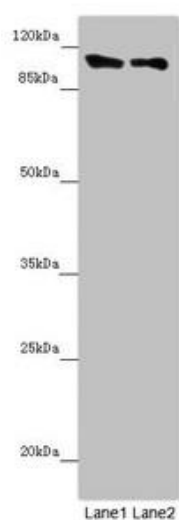
Immunogen:

Recombinant Human ATP-dependent DNA helicase DDX11 protein (1-220AA).

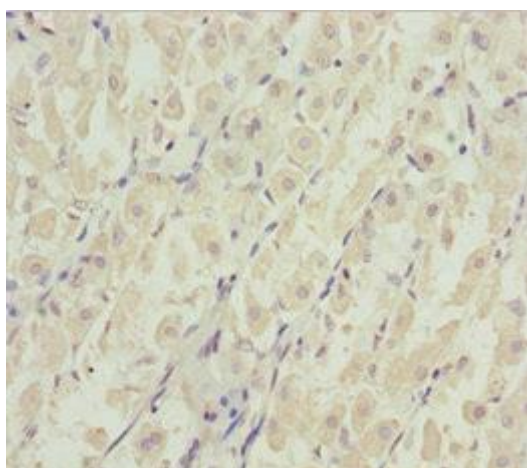
Storage:

PBS with 0.02% sodium azide, 50% glycerol, pH7.3.

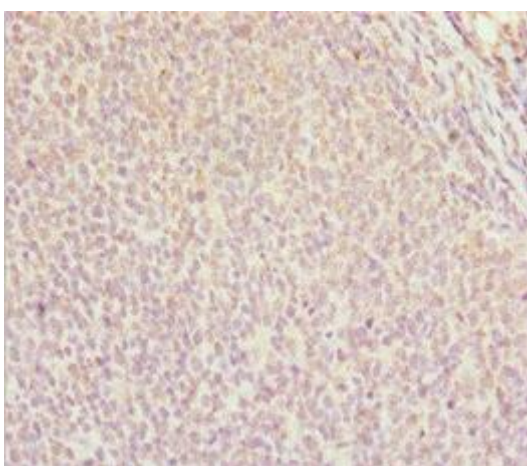
Product Images



Western blot. All lanes: DDX11 antibody at 8.47 μ g/ml. Lane 1: Mouse gonadal tissue. Lane 2: K562 whole cell lysate. Secondary. Goat polyclonal to rabbit IgG at 1/10000 dilution. Predicted band size: 109, 102, 99, 97, 33 kDa. Observed band size: 109 kDa.



Immunohistochemistry of paraffin-embedded human gastric cancer using PACO45000 at dilution of 1:100.



Immunohistochemistry of paraffin-embedded human tonsil tissue using PACO45000 at dilution of 1:100.