

PACO44993

Product Information

Size:

50ul

Reactivity:

Human, Mouse

Source:

Rabbit

Isotype:

IgG

Applications:

ELISA, WB, IHC

Recommended dilutions:

ELISA:1:2000-1:10000, WB:1:1000-1:5000,
IHC:1:20-1:200

Protein Background:

Required for normal Golgi function. Plays a role in SNARE-pin assembly and Golgi-to-ER retrograde transport via its interaction with SCFD1.

Gene ID:

COG4

Uniprot

Q9H9E3

Synonyms:

Conserved oligomeric Golgi complex subunit 4 (COG complex subunit 4) (Component of oligomeric Golgi complex 4), COG4

Immunogen:

Recombinant Human Conserved oligomeric Golgi complex subunit 4 protein (506-785AA).

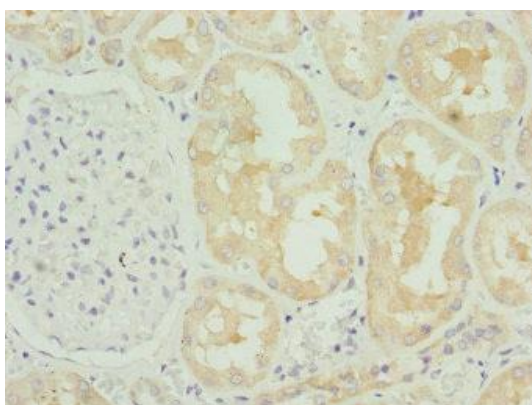
Storage:

PBS with 0.02% sodium azide, 50% glycerol, pH7.3.

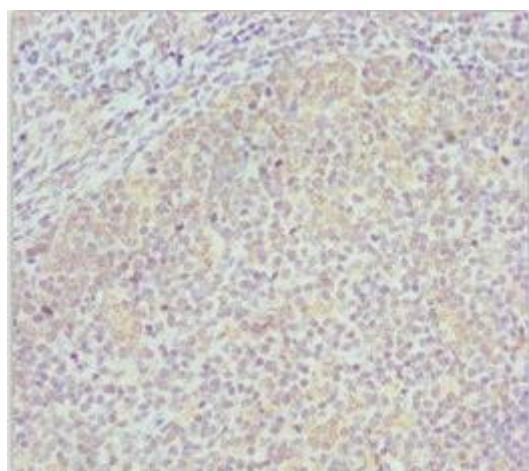
Product Images



Western blot. All lanes: COG4 antibody at 4.85 μ g/ml. Lane 1: Mouse liver tissue. Lane 2: Mouse gonadal tissue. Lane 3: K562 whole cell lysate. Lane 4: Hela whole cell lysate. Secondary: Goat polyclonal to rabbit IgG at 1/10000 dilution. Predicted band size: 90, 39, 82 kDa. Observed band size: 90 kDa.



Immunohistochemistry of paraffin-embedded human kidney tissue using PACO44993 at dilution of 1:100.



Immunohistochemistry of paraffin-embedded human tonsil tissue using PACO44993 at dilution of 1:100.