

## Product Information

**Size:**

50ul

**Reactivity:**

Human

**Source:**

Rabbit

**Isotype:**

IgG

**Applications:**

ELISA, IHC

**Recommended dilutions:**

ELISA:1:2000-1:10000, IHC:1:20-1:200

**Protein Background:**

Accessory subunit of the mitochondrial membrane respiratory chain NADH dehydrogenase (Complex I), that is believed not to be involved in catalysis. Complex I functions in the transfer of electrons from NADH to the respiratory chain. The immediate electron acceptor for the enzyme is believed to be ubiquinone.

**Gene ID:**

NDUFA9

**Uniprot**

Q16795

**Synonyms:**

NADH dehydrogenase [ubiquinone] 1 alpha subcomplex subunit 9, mitochondrial (Complex I-39kD) (CI-39kD) (NADH-ubiquinone oxidoreductase 39 kDa subunit), NDUFA9, NDUFS2L

**Immunogen:**

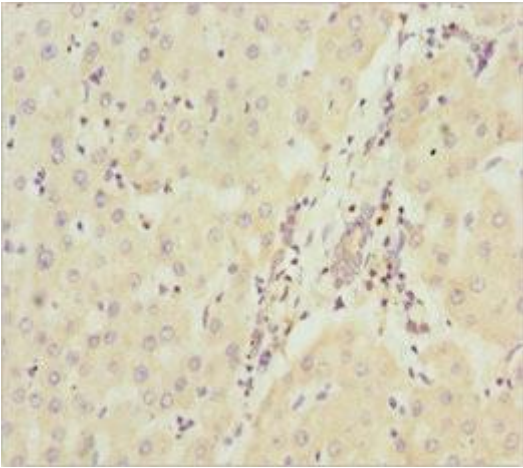
Recombinant Human NADH dehydrogenase [ubiquinone] 1 &alpha; subcomplex subunit 9, mitochondrial protein (1-270AA).

**Storage:**

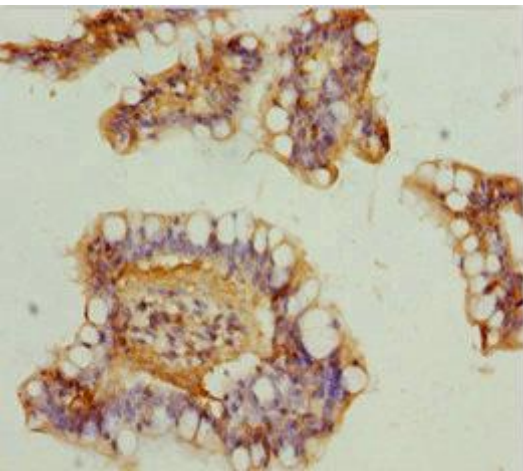
PBS with 0.02% sodium azide, 50% glycerol, pH7.3.

## Product Images

---



Immunohistochemistry of paraffin-embedded human liver cancer using PACO44959 at dilution of 1:100.



Immunohistochemistry of paraffin-embedded human small intestine tissue using PACO44959 at dilution of 1:100.