

PACO44958

Product Information

Size:

50ul

Reactivity:

Human

Source:

Rabbit

Isotype:

IgG

Applications:

ELISA, IHC

Recommended dilutions:

ELISA:1:2000-1:10000, IHC:1:20-1:200

Protein Background:

May be involved in the calcium-dependent regulation of rhodopsin phosphorylation. Binds three calcium ions.

Gene ID:

NCALD

Uniprot

P61601

Synonyms:

Neurocalcin-delta, NCALD

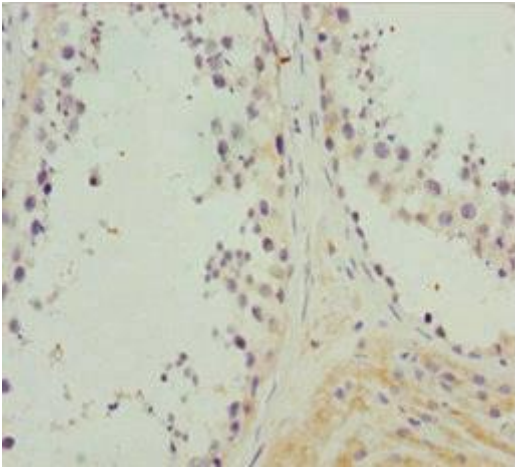
Immunogen:

Recombinant Human Neurocalcin-delta protein (1-193AA).

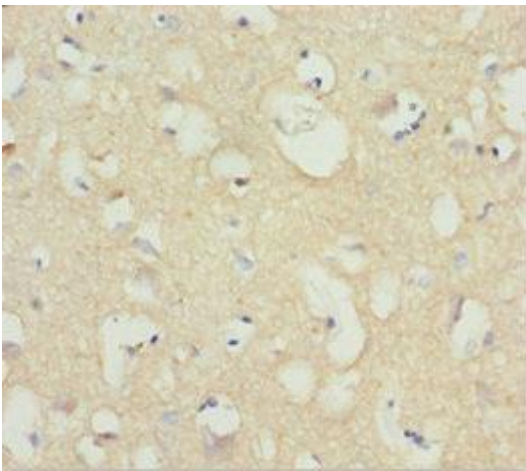
Storage:

PBS with 0.02% sodium azide, 50% glycerol, pH7.3.

Product Images



Immunohistochemistry of paraffin-embedded human testis tissue using PACO44958 at dilution of 1:100.



Immunohistochemistry of paraffin-embedded human brain tissue using PACO44958 at dilution of 1:100.