

PACO44942

Product Information

Size:

50ul

Reactivity:

Human, Mouse

Source:

Rabbit

Isotype:

IgG

Applications:

ELISA, WB

Recommended dilutions:

ELISA:1:2000-1:10000, WB:1:1000-1:5000

Protein Background:

Links covalently the heme group to the apoprotein of cytochrome c.

Gene ID:

HCCS

Uniprot

P53701

Synonyms:

Cytochrome c-type heme lyase (CCHL) (EC 4.4.1.17) (Holocytochrome c-type synthase), HCCS, CCHL

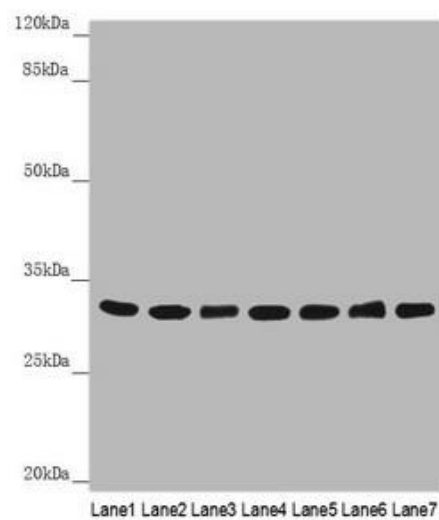
Immunogen:

Recombinant Human Cytochrome c-type heme lyase protein (1-268AA).

Storage:

PBS with 0.02% sodium azide, 50% glycerol, pH7.3.

Product Images



Western blot. All lanes: HCCS antibody at 3.54 μ g/ml. Lane 1: Mouse small intestine tissue. Lane 2: Mouse heart tissue. Lane 3: Mouse skeletal muscle tissue. Lane 4: Hela whole cell lysate. Lane 5: RAW264.7 whole cell lysate. Lane 6: MCF-7 whole cell lysate. Lane 7: HepG2 whole cell lysate. Secondary. Goat polyclonal to rabbit IgG at 1/10000 dilution. Predicted band size: 31 kDa. Observed band size: 31 kDa.