

SLC34A1 Antibody



PACO44915

Product Information

Size:

50ul

Reactivity:

Human, Mouse

Source:

Rabbit

Isotype:

IgG

Applications:

ELISA, WB, IHC

Recommended dilutions:

ELISA:1:2000-1:10000, WB:1:1000-1:5000,
IHC:1:20-1:200

Protein Background:

May be involved in actively transporting phosphate into cells via Na(+) cotransport in the renal brush border membrane. Probably mediates 70-80% of the apical influx.

Gene ID:

SLC34A1

Uniprot

Q06495

Synonyms:

Sodium-dependent phosphate transport protein 2A (Sodium-phosphate transport protein 2A) (Na(+)-dependent phosphate cotransporter 2A) (NaPi-3) (Sodium/phosphate cotransporter 2A) (Na(+)/Pi cotransporter 2A) (NaPi-2a) (Solute carrier family 34 member 1), SLC34A1, NPT2 SLC17A2

Immunogen:

Recombinant Human Sodium-dependent phosphate transport protein 2A protein (1-103AA).

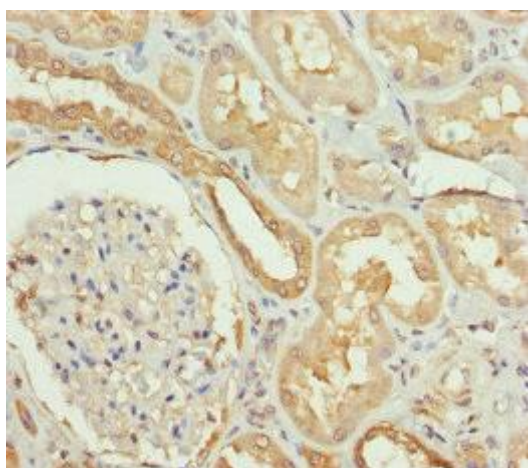
Storage:

PBS with 0.02% sodium azide, 50% glycerol, pH7.3.

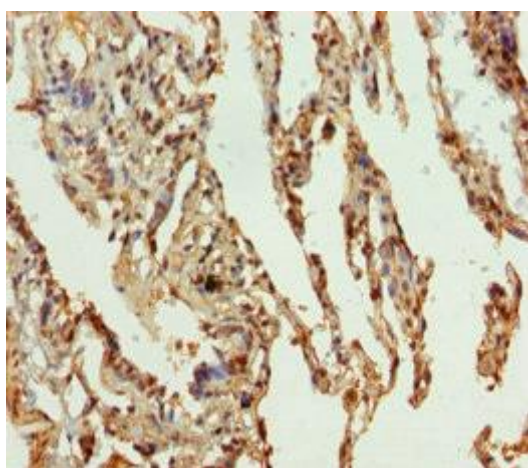
Product Images



Western blot. All lanes: SLC34A1 antibody at 2.34 $\mu\text{g/ml}$ + Mouse brain tissue. Secondary. Goat polyclonal to rabbit IgG at 1/10000 dilution. Predicted band size: 69, 37 kDa. Observed band size: 69 kDa.



Immunohistochemistry of paraffin-embedded human kidney tissue using PACO44915 at dilution of 1:100.



Immunohistochemistry of paraffin-embedded human lung tissue using PACO44915 at dilution of 1:100.