

PACO44889

Product Information

Size:

50ul

Reactivity:

Human

Source:

Rabbit

Isotype:

IgG

Applications:

ELISA, IHC

Recommended dilutions:

ELISA:1:2000-1:10000, IHC:1:20-1:200

Protein Background:

Required for renal tubular integrity. May regulate local cytoskeletal structure in kidney tubule epithelial cells. May regulate ciliary biogenesis through targeting of proteins to the cilia. Plays a role in organogenesis and is involved in the regulation of the Hippo signaling pathway.

Gene ID:

NEK8

Uniprot

Q86SG6

Synonyms:

Serine/threonine-protein kinase Nek8 (EC 2.7.11.1) (Never in mitosis A-related kinase 8) (NimA-related protein kinase 8) (Nima-related protein kinase 12a), NEK8, JCK NEK12A

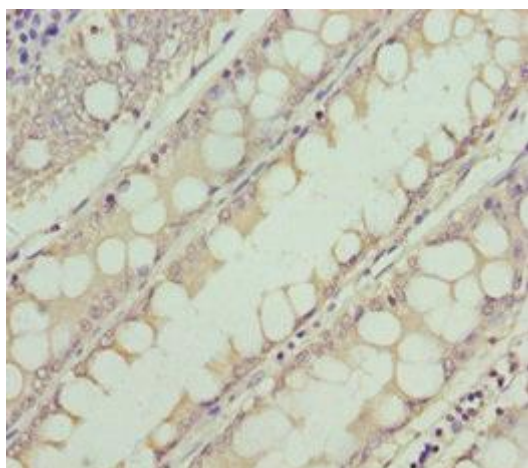
Immunogen:

Recombinant Human Serine/threonine-protein kinase Nek8 protein (1-300AA).

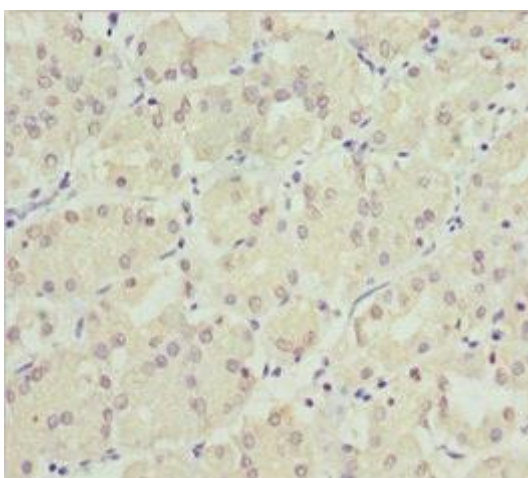
Storage:

PBS with 0.02% sodium azide, 50% glycerol, pH7.3.

Product Images



Immunohistochemistry of paraffin-embedded human colon cancer using PACO44889 at dilution of 1:100.



Immunohistochemistry of paraffin-embedded human gastric cancer using PACO44889 at dilution of 1:100.