

PACO44877

Product Information

Size:

50ul

Reactivity:

Human

Source:

Rabbit

Isotype:

IgG

Applications:

ELISA, WB, IHC

Recommended dilutions:

ELISA:1:2000-1:10000, WB:1:1000-1:5000,
IHC:1:20-1:200

Protein Background:

Involved in the apoptotic response after nerve growth factor (NGF) binding in neuronal cells. Inhibits cell cycle progression, and facilitates NGFR-mediated apoptosis. May act as a regulator of the function of DLX family members. May enhance ubiquitin ligase activity of RING-type zinc finger-containing E3 ubiquitin-protein ligases. Proposed to act through recruitment and/or stabilization of the Ubl-conjugating enzyme (E2) at the E3: substrate complex. Plays a role in the circadian rhythm regulation. May act as RORA co-regulator, modulating the expression of core clock genes such as ARNTL/BMAL1 and NFIL3, induced, or NR1D1, repressed.

Gene ID:

MAGED1

Uniprot

Q9Y5V3

Synonyms:

Melanoma-associated antigen D1 (MAGE tumor antigen CCF) (MAGE-D1 antigen) (Neurotrophin receptor-interacting MAGE homolog), MAGED1, NRAGE

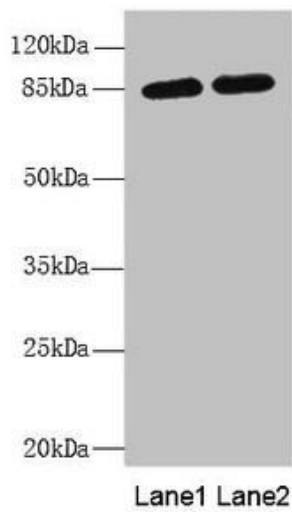
Immunogen:

Recombinant Human Melanoma-associated antigen D1 protein (579-778AA).

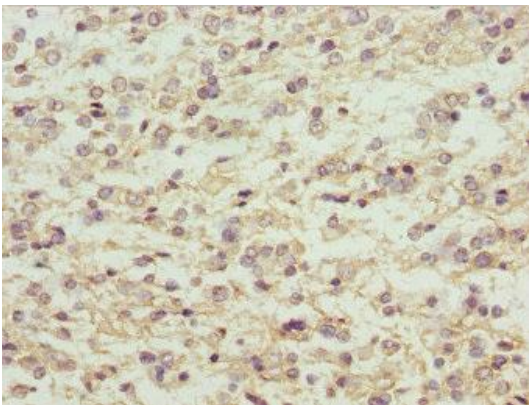
Storage:

PBS with 0.02% sodium azide, 50% glycerol, pH7.3.

Product Images



Western blot. All lanes: MAGED1 antibody at 5.52 μ g/ml. Lane 1: A375 whole cell lysate. Lane 2: 293T whole cell lysate. Secondary. Goat polyclonal to rabbit IgG at 1/10000 dilution. Predicted band size: 87, 92 kDa. Observed band size: 87 kDa.



Immunohistochemistry of paraffin-embedded human glioma using PACO44877 at dilution of 1:100.