

# BVES Antibody



PACO44876

---

## Product Information

**Size:**

50ul

**Reactivity:**

Human

**Source:**

Rabbit

**Isotype:**

IgG

**Applications:**

ELISA, IF

**Recommended dilutions:**

ELISA:1:2000-1:10000, IF:1:50-1:200

**Protein Background:**

**Gene ID:**

BVES

**Uniprot**

Q8NE79

**Synonyms:**

Blood vessel epicardial substance (hBVES) (Popeye domain-containing protein 1) (Popeye protein 1), BVES, POP1 POPDC1

**Immunogen:**

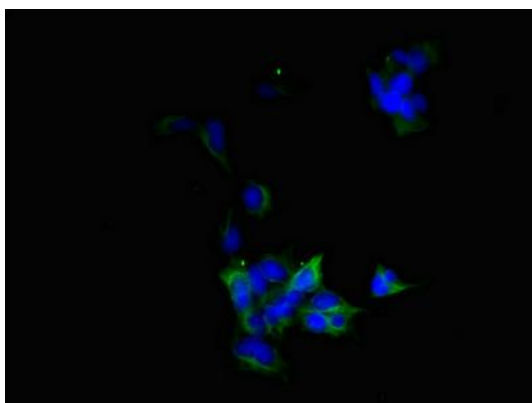
Recombinant Human Blood vessel epicardial substance protein (241-360AA).

**Storage:**

PBS with 0.02% sodium azide, 50% glycerol, pH7.3.

## Product Images

---



Immunofluorescent analysis of 293 cells using PACO44876 at dilution of 1:100 and Alexa Fluor 488-conjugated AffiniPure Goat Anti-Rabbit IgG(H+L).