

PACO44872

Product Information

Size:

50ul

Reactivity:

Human, Mouse

Source:

Rabbit

Isotype:

IgG

Applications:

ELISA, WB, IHC

Recommended dilutions:

ELISA:1:2000-1:10000, WB:1:1000-1:5000,
IHC:1:20-1:200

Protein Background:

Protects the body from potent vasoactive and inflammatory peptides containing C-terminal Arg or Lys (such as kinins or anaphylatoxins) which are released into the circulation.

Gene ID:

CPN1

Uniprot

P15169

Synonyms:

Carboxypeptidase N catalytic chain (CPN) (EC 3.4.17.3) (Anaphylatoxin inactivator) (Arginine carboxypeptidase) (Carboxypeptidase N polypeptide 1) (Carboxypeptidase N small subunit) (Kininase-1) (Lysine carboxypeptidase) (Plasma carboxypeptidase B) (Serum carboxypeptidase N) (SCPN), CPN1, ACBP

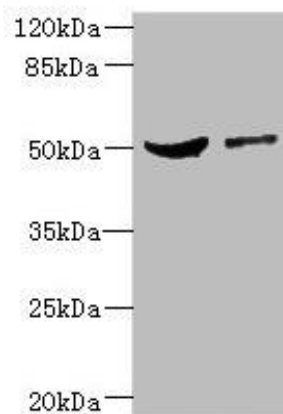
Immunogen:

Recombinant Human Carboxypeptidase N catalytic chain protein (209-458AA).

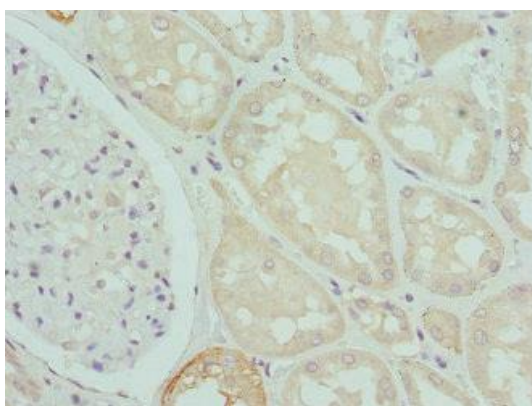
Storage:

PBS with 0.02% sodium azide, 50% glycerol, pH7.3.

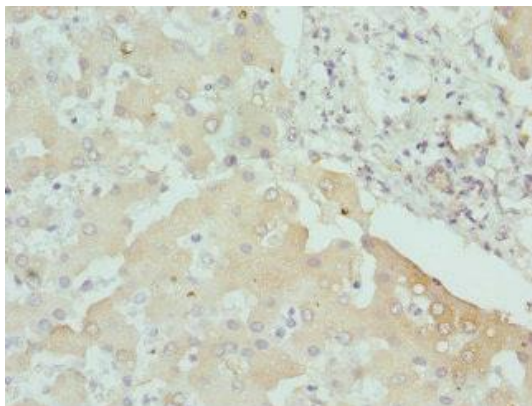
Product Images



Western blot. All lanes: CPN1 antibody at 6.19 μ g/ml. Lane 1: Mouse liver tissue. Lane 2: MCF-7 whole cell lysate. Secondary. Goat polyclonal to rabbit IgG at 1/10000 dilution. Predicted band size: 52 kDa. Observed band size: 52 kDa.



Immunohistochemistry of paraffin-embedded human kidney tissue using PACO44872 at dilution of 1:100.



Immunohistochemistry of paraffin-embedded human liver tissue using PACO44872 at dilution of 1:100.