

Product Information

Size:

50ul

Reactivity:

Human

Source:

Rabbit

Isotype:

IgG

Applications:

ELISA, IHC

Recommended dilutions:

ELISA:1:2000-1:10000, IHC:1:20-1:200

Protein Background:

Protects the body from potent vasoactive and inflammatory peptides containing C-terminal Arg or Lys (such as kinins or anaphylatoxins) which are released into the circulation.

Gene ID:

CPN1

Uniprot

P15169

Synonyms:

Carboxypeptidase N catalytic chain (CPN) (EC 3.4.17.3) (Anaphylatoxin inactivator) (Arginine carboxypeptidase) (Carboxypeptidase N polypeptide 1) (Carboxypeptidase N small subunit) (Kininase-1) (Lysine carboxypeptidase) (Plasma carboxypeptidase B) (Serum carboxypeptidase N) (SCPN), CPN1, ACBP

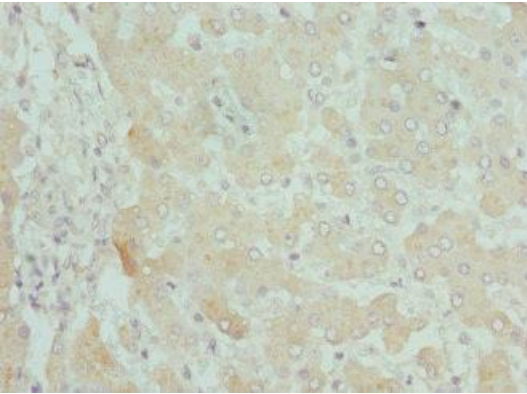
Immunogen:

Recombinant Human Carboxypeptidase N catalytic chain protein (209-458AA).

Storage:

PBS with 0.02% sodium azide, 50% glycerol, pH7.3.

Product Images



Immunohistochemistry of paraffin-embedded human liver tissue using PACO44871 at dilution of 1:100.