

C1GALT1C1 Antibody



PACO44862

Product Information

Size:

50ul

Reactivity:

Human, Mouse

Source:

Rabbit

Isotype:

IgG

Applications:

ELISA, WB, IHC, IF

Recommended dilutions:

ELISA:1:2000-1:10000, WB:1:500-1:2000,
IHC:1:20-1:200, IF:1:50-1:200

Protein Background:

Probable chaperone required for the generation of 1 O-glycan Gal-beta1-3GalNAc-alpha1-Ser/Thr (T antigen), which is a precursor for many extended O-glycans in glycoproteins. Probably acts as a specific molecular chaperone assisting the folding/stability of core 1 beta-3-galactosyltransferase (C1GALT1).

Gene ID:

C1GALT1C1

Uniprot

Q96EU7

Synonyms:

C1GALT1-specific chaperone 1 (C38H2-like protein 1) (C38H2-L1) (Core 1 beta1,3-galactosyltransferase 2) (C1Gal-T2) (C1GalT2) (Core 1 beta3-Gal-T2) (Core 1 beta3-galactosyltransferase-specific molecular chaperone), C1GALT1C1, COSMC

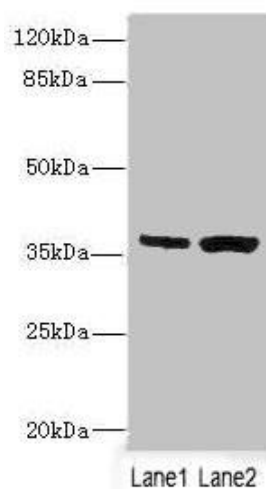
Immunogen:

Recombinant Human C1GALT1-specific chaperone 1 protein (30-190AA).

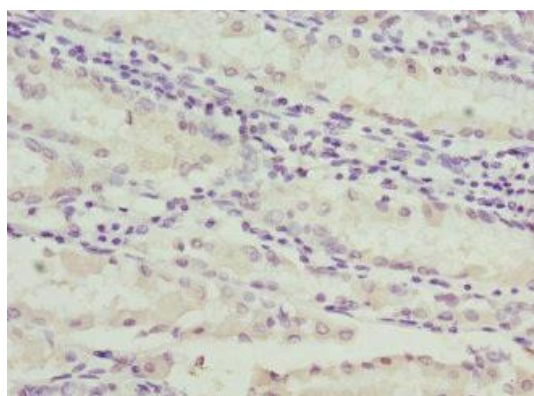
Storage:

PBS with 0.02% sodium azide, 50% glycerol, pH7.3.

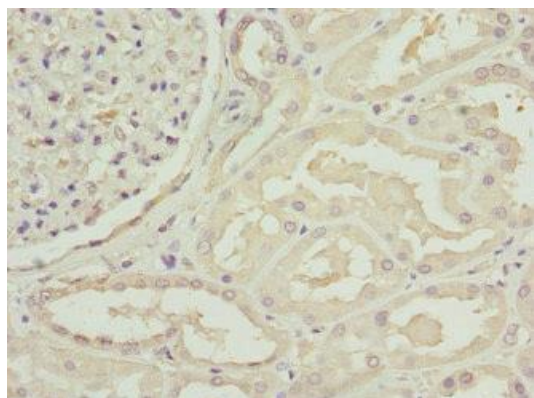
Product Images



Western blot. All lanes: C1GALT1C1 antibody at 3.97 μ g/ml. Lane 1: Mouse gonadal tissue. Lane 2: Mouse liver tissue. Secondary: Goat polyclonal to rabbit IgG at 1/10000 dilution. Predicted band size: 36 kDa. Observed band size: 36 kDa.



Immunohistochemistry of paraffin-embedded human gastric cancer using PACO44862 at dilution of 1:100.



Immunohistochemistry of paraffin-embedded human kidney tissue using PACO44862 at dilution of 1:100.