

PACO44852

Product Information

Size:

50ul

Reactivity:

Human

Source:

Rabbit

Isotype:

IgG

Applications:

ELISA, IHC

Recommended dilutions:

ELISA:1:2000-1:10000, IHC:1:20-1:200

Protein Background:

Tubulin-folding protein; involved in the second step of the tubulin folding pathway. Seems to be implicated in the maintenance of the neuronal microtubule network. Involved in regulation of tubulin heterodimer dissociation.

Gene ID:

TBCE

Uniprot

Q15813

Synonyms:

Tubulin-specific chaperone E (Tubulin-folding cofactor E), TBCE

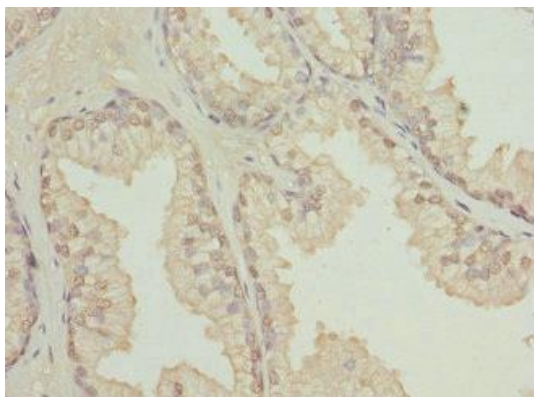
Immunogen:

Recombinant Human Tubulin-specific chaperone E protein (328-527AA).

Storage:

PBS with 0.02% sodium azide, 50% glycerol, pH7.3.

Product Images



Immunohistochemistry of paraffin-embedded human prostate cancer using PACO44852 at dilution of 1:100.