

IL21R Antibody



PACO44834

Product Information

Size:

50ul

Reactivity:

Human

Source:

Rabbit

Isotype:

IgG

Applications:

ELISA, WB, IHC

Recommended dilutions:

ELISA:1:2000-1:10000, WB:1:1000-1:5000,
IHC:1:20-1:200

Protein Background:

This is a receptor for interleukin-21.

Gene ID:

IL21R

Uniprot

Q9HBE5

Synonyms:

Interleukin-21 receptor (IL-21 receptor) (IL-21R) (Novel interleukin receptor) (CD antigen CD360), IL21R, NILR

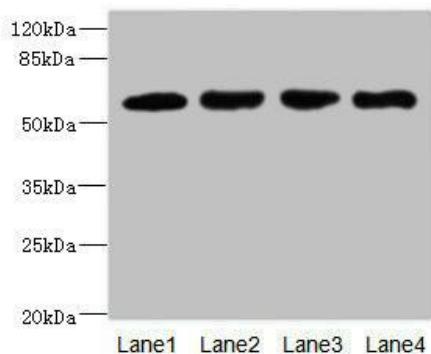
Immunogen:

Recombinant Human Interleukin-21 receptor protein (20-240AA).

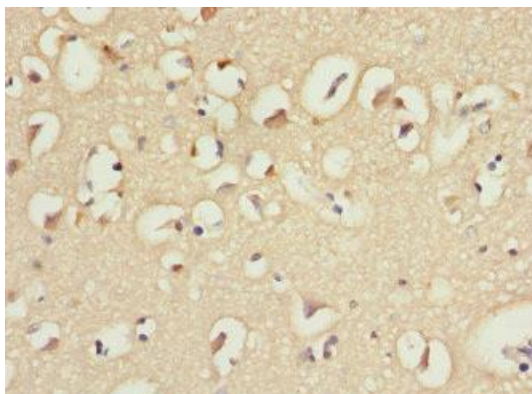
Storage:

PBS with 0.02% sodium azide, 50% glycerol, pH7.3.

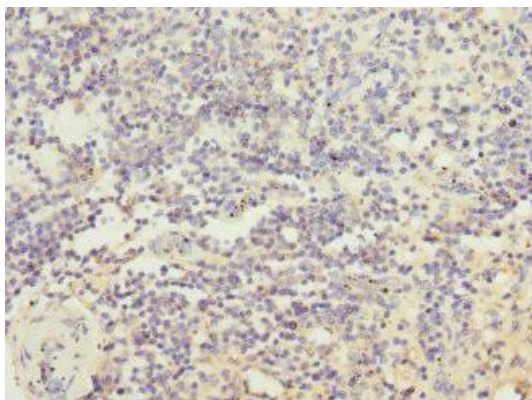
Product Images



Western blot. All lanes: IL21R antibody at 2.18 μ g/ml. Lane 1: A549 whole cell lysate. Lane 2: Raji whole cell lysate. Lane 3: Colo320 whole cell lysate. Lane 4: K562 whole cell lysate. Secondary. Goat polyclonal to rabbit IgG at 1/10000 dilution. Predicted band size: 59 kDa. Observed band size: 59 kDa.



Immunohistochemistry of paraffin-embedded human brain tissue using PACO44834 at dilution of 1:100.



Immunohistochemistry of paraffin-embedded human spleen tissue using PACO44834 at dilution of 1:100.