

IL21R Antibody



PACO44833

Product Information

Size:

50ul

Reactivity:

Human

Source:

Rabbit

Isotype:

IgG

Applications:

ELISA, IHC

Recommended dilutions:

ELISA:1:2000-1:10000, IHC:1:20-1:200

Protein Background:

This is a receptor for interleukin-21.

Gene ID:

IL21R

Uniprot

Q9HBE5

Synonyms:

Interleukin-21 receptor (IL-21 receptor) (IL-21R) (Novel interleukin receptor) (CD antigen CD360), IL21R, NILR

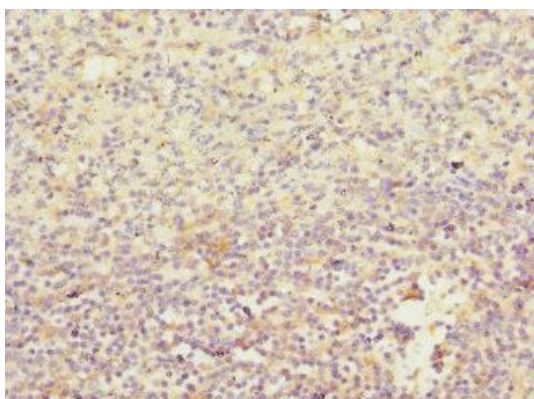
Immunogen:

Recombinant Human Interleukin-21 receptor protein (20-240AA).

Storage:

PBS with 0.02% sodium azide, 50% glycerol, pH7.3.

Product Images



Immunohistochemistry of paraffin-embedded human spleen tissue using PACO44833 at dilution of 1:100.