

# ICAM4 Antibody



PACO44830

---

## Product Information

**Size:**

50ul

**Reactivity:**

Human, Mouse

**Source:**

Rabbit

**Isotype:**

IgG

**Applications:**

ELISA, WB, IHC

**Recommended dilutions:**

ELISA:1:2000-1:10000, WB:1:1000-1:5000,  
IHC:1:20-1:200

**Protein Background:**

ICAM proteins are ligands for the leukocyte adhesion protein LFA-1 (integrin alpha-L/beta-2). ICAM4 is also a ligand for alpha-4/beta-1 and alpha-V integrins.

**Gene ID:**

ICAM4

**Uniprot**

Q14773

**Synonyms:**

Intercellular adhesion molecule 4 (ICAM-4) (Landsteiner-Wiener blood group glycoprotein) (LW blood group protein) (CD antigen CD242), ICAM4, LW

**Immunogen:**

Recombinant Human Intercellular adhesion molecule 4 protein (20-140AA).

**Storage:**

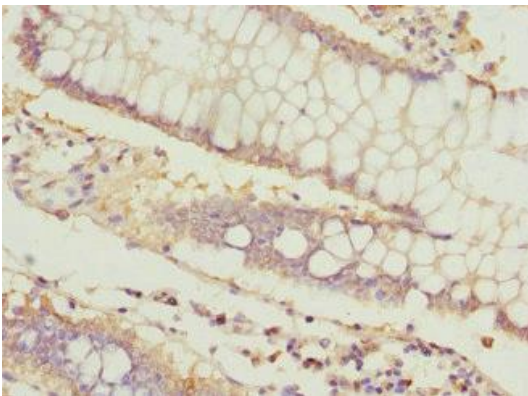
PBS with 0.02% sodium azide, 50% glycerol, pH7.3.

## Product Images

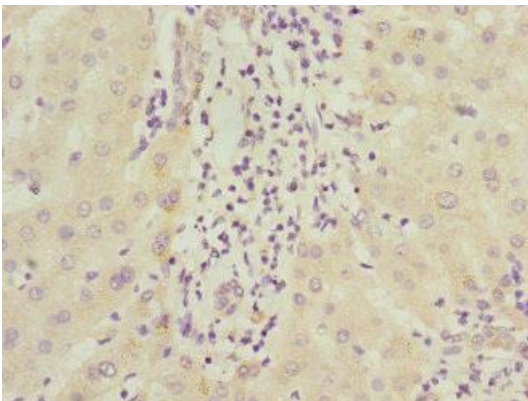
---



Western blot. All lanes: ICAM4 antibody at 4.98 $\mu$ g/ml + Mouse brain tissue. Secondary. Goat polyclonal to rabbit IgG at 1/10000 dilution. Predicted band size: 30, 26 kDa. Observed band size: 30 kDa.



Immunohistochemistry of paraffin-embedded human colon cancer using PACO44830 at dilution of 1:100.



Immunohistochemistry of paraffin-embedded human liver cancer using PACO44830 at dilution of 1:100.