

# EIF2B1 Antibody



PACO44828

---

## Product Information

**Size:**

50ul

**Reactivity:**

Human, Mouse

**Source:**

Rabbit

**Isotype:**

IgG

**Applications:**

ELISA, WB, IHC

**Recommended dilutions:**

ELISA:1:2000-1:10000, WB:1:1000-1:5000,  
IHC:1:20-1:200

**Protein Background:**

Catalyzes the exchange of eukaryotic initiation factor 2-bound GDP for GTP.

**Gene ID:**

EIF2B1

**Uniprot**

Q14232

**Synonyms:**

Translation initiation factor eIF-2B subunit alpha (eIF-2B GDP-GTP exchange factor subunit alpha), EIF2B1, EIF2BA

**Immunogen:**

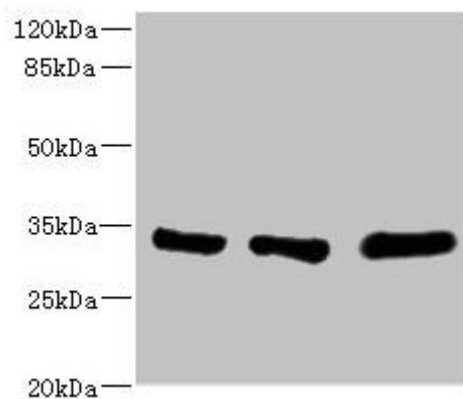
Recombinant Human Translation initiation factor eIF-2B subunit &alpha; protein (1-305AA).

**Storage:**

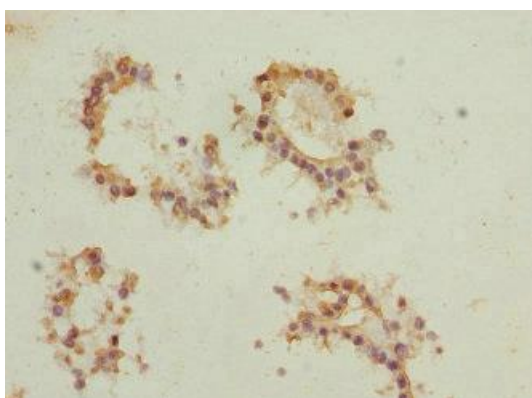
PBS with 0.02% sodium azide, 50% glycerol, pH7.3.

## Product Images

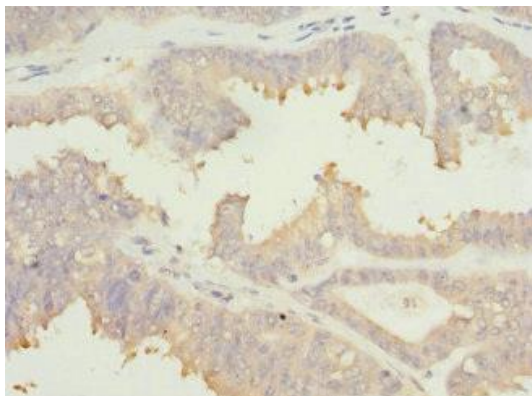
---



Western blot. All lanes: EIF2B1 antibody at 5.14 $\mu$ g/ml. Lane 1: K562 whole cell lysate. Lane 2: Mouse brain tissue. Lane 3: Jurkat whole cell lysate. Secondary. Goat polyclonal to rabbit IgG at 1/10000 dilution. Predicted band size: 34, 25 kDa. Observed band size: 34 kDa.



Immunohistochemistry of paraffin-embedded human breast cancer using PACO44828 at dilution of 1:100.



Immunohistochemistry of paraffin-embedded human prostate cancer using PACO44828 at dilution of 1:100.