

CYP2C18 Antibody



PACO44825

Product Information

Size:

50ul

Reactivity:

Human

Source:

Rabbit

Isotype:

IgG

Applications:

ELISA, WB, IHC

Recommended dilutions:

ELISA:1:2000-1:10000, WB:1:1000-1:5000,
IHC:1:20-1:200

Protein Background:

Cytochromes P450 are a group of heme-thiolate monooxygenases. In liver microsomes, this enzyme is involved in an NADPH-dependent electron transport pathway. It oxidizes a variety of structurally unrelated compounds, including steroids, fatty acid, , and xenobiotics.

Gene ID:

CYP2C18

Uniprot

P33260

Synonyms:

Cytochrome P450 2C18 (EC 1.14.14.1) (CYP11C18) (Cytochrome P450-6b/29c), CYP2C18

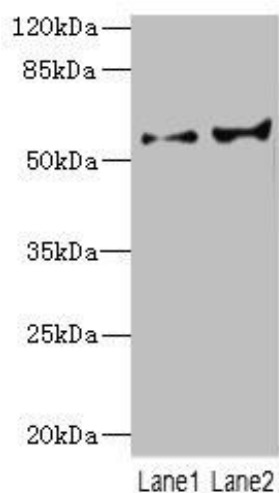
Immunogen:

Recombinant Human Cytochrome P450 2C18 protein (231-490AA).

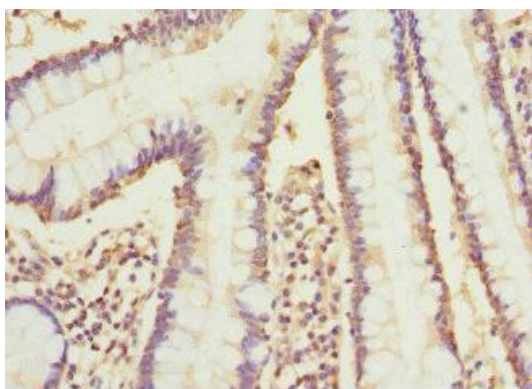
Storage:

PBS with 0.02% sodium azide, 50% glycerol, pH7.3.

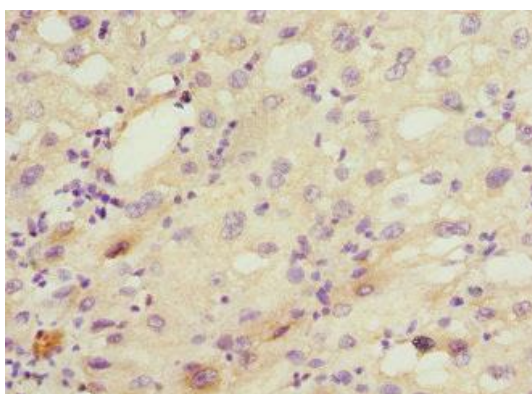
Product Images



Western blot. All lanes: CYP2C18 antibody at 5.98 μ g/ml. Lane 1: HL60 whole cell lysate. Lane 2: 293T whole cell lysate. Secondary: Goat polyclonal to rabbit IgG at 1/10000 dilution. Predicted band size: 56, 49 kDa. Observed band size: 56 kDa.



Immunohistochemistry of paraffin-embedded human small intestine tissue using PACO44825 at dilution of 1:100.



Immunohistochemistry of paraffin-embedded human liver cancer using PACO44825 at dilution of 1:100.