

# ZFYVE16 Antibody



PACO44820

---

## Product Information

**Size:**

50ul

**Reactivity:**

Human

**Source:**

Rabbit

**Isotype:**

IgG

**Applications:**

ELISA, IHC, IF

**Recommended dilutions:**

ELISA:1:2000-1:10000, IHC:1:20-1:200,  
IF:1:50-1:200

**Protein Background:**

May be involved in regulating membrane trafficking in the endosomal pathway. Overexpression induces endosome aggregation. Required to target TOM1 to endosomes.

**Gene ID:**

ZFYVE16

**Uniprot**

Q7Z3T8

**Synonyms:**

Zinc finger FYVE domain-containing protein 16 (Endofin) (Endosome-associated FYVE domain protein), ZFYVE16, KIAA0305

**Immunogen:**

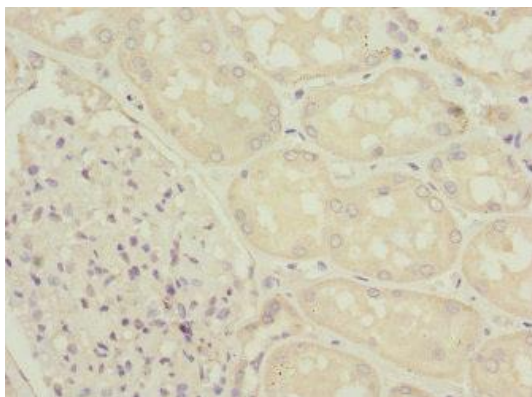
Recombinant Human Zinc finger FYVE domain-containing protein 16 protein (1-280AA).

**Storage:**

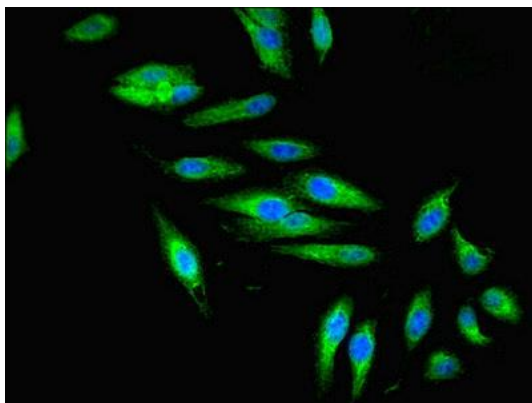
PBS with 0.02% sodium azide, 50% glycerol, pH7.3.

## Product Images

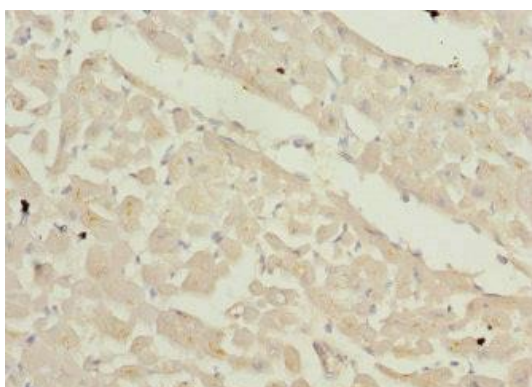
---



Immunohistochemistry of paraffin-embedded human kidney tissue using PACO44820 at dilution of 1:100.



Immunofluorescent analysis of HeLa cells using PACO44820 at dilution of 1:100 and Alexa Fluor 488-conjugated AffiniPure Goat Anti-Rabbit IgG(H+L).



Immunohistochemistry of paraffin-embedded human heart tissue using PACO44820 at dilution of 1:100.