

# VANGL1 Antibody



PACO44811

---

## Product Information

**Size:**

50ul

**Reactivity:**

Human

**Source:**

Rabbit

**Isotype:**

IgG

**Applications:**

ELISA, WB, IHC

**Recommended dilutions:**

ELISA:1:2000-1:10000, WB:1:1000-1:5000,  
IHC:1:20-1:200

**Protein Background:**

Wnt signaling pathway, planar cell polarity pathway.

**Gene ID:**

VANGL1

**Uniprot**

Q8TAA9

**Synonyms:**

Vang-like protein 1 (Loop-tail protein 2 homolog) (LPP2) (Strabismus 2) (Van Gogh-like protein 1), VANGL1, STB2

**Immunogen:**

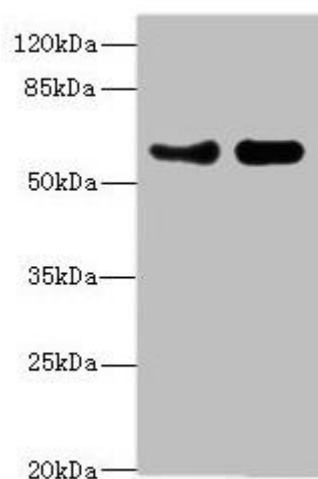
Recombinant Human Vang-like protein 1 protein (275-524AA).

**Storage:**

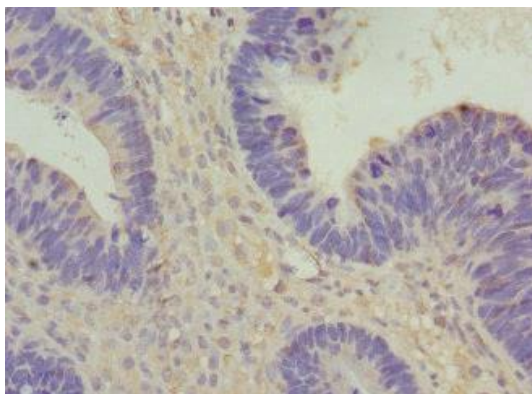
PBS with 0.02% sodium azide, 50% glycerol, pH7.3.

## Product Images

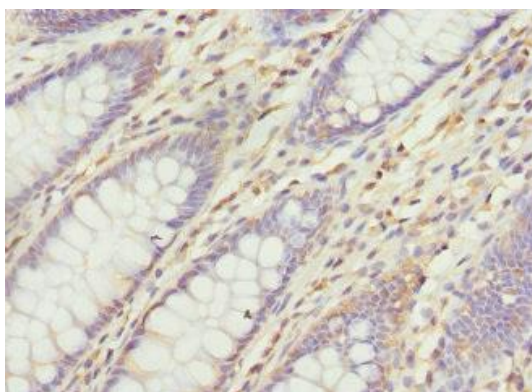
---



Western blot. All lanes: VANGL1 antibody at 3.38 $\mu$ g/ml. Lane 1: PC-3 whole cell lysate. Lane 2: Hela whole cell lysate. Secondary. Goat polyclonal to rabbit IgG at 1/10000 dilution. Predicted band size: 60 kDa. Observed band size: 60 kDa.



Immunohistochemistry of paraffin-embedded human ovarian cancer using PACO44811 at dilution of 1:100.



Immunohistochemistry of paraffin-embedded human colon cancer using PACO44811 at dilution of 1:100.